



TRAFFORD COUNCIL

AGENDA PAPERS FOR TRAFFORD COVID-19 PUBLIC ENGAGEMENT BOARD

Date: Wednesday, 12 January 2022

Time: 10.00 am

Place: Virtual Meeting

<https://www.youtube.com/channel/UCjwblOW5x0NSe38sgFU8bKg>

A G E N D A	P A R T I	Pages
1. ATTENDANCES		
To note attendances, including officers, and any apologies for absence.		
2. DECLARATIONS OF INTEREST		
Members to give notice of any interest and the nature of that interest relating to any item on the agenda in accordance with the adopted Code of Conduct.		
3. MINUTES		1 - 4
To receive and, if so determined, to approve as a correct record the Minutes of the meeting held on 15.12.21.		
4. UPDATE ON THE CURRENT COVID-19 SITUATION IN TRAFFORD		5 - 20
To receive an update from the Acting Director of Public Health.		
5. 10 POINT PLAN UPDATE		
(a) Mass Testing		
To receive a verbal update from the Strategic Testing Lead.		
(b) Contact Tracing and Outbreak Management		
To receive a verbal update from the Covid-19 Project Manager.		
(c) Mass Vaccination		
To receive a verbal update from the Deputy Medical Director, Trafford		

CCG.

(d) **Community Engagement**

To receive a verbal update from Regulatory Services.

6. PUBLIC ENGAGEMENT BOARD ACTIVITY

For all Board Members to provide updates on any activity pertaining to the remit of the Board not covered elsewhere on the agenda.

7. ANY OTHER BUSINESS

To consider any other items of business not on the agenda which need to be considered by the Board before the next confirmed meeting.

SARA TODD

Chief Executive

Membership of the Committee

Council Leader or named Elected Member, nominated leads from opposition parties
VCSE representatives – including specialists relating to key population groups (older people; BAME; children; mental health , Learning Difficulties), Partnerships lead, Communications lead, Director of Public Health, Director of Adult Social Services, Director for Children's Services, Neighbourhood representatives, Clinical Commissioning Group representative, Trafford Local Care Organisation representative, Healthwatch Representative

Further Information

For help, advice and information about this meeting please contact:

Molly Shaw,
Tel: 07890032570
Email: molly.shaw@trafford.gov.uk

This agenda was issued on **10th January 2022** by the Legal and Democratic Services Section, Trafford Council, Trafford Town Hall; Talbot Road, Stretford, Manchester, M32 0TH

WEBCASTING

This meeting will be filmed for live and / or subsequent broadcast on the Council's website and / or YouTube channel <https://www.youtube.com/user/traffordcouncil>

The whole of the meeting will be filmed, except where there are confidential or exempt items.

If you make a representation to the meeting you will be deemed to have consented to being filmed. By entering the body of the Committee Room you are also consenting to

Trafford Covid-19 Public Engagement Board - Wednesday, 12 January 2022

being filmed and to the possible use of those images and sound recordings for webcasting and/or training purposes. If you do not wish to have your image captured or if you have any queries regarding webcasting of meetings, please contact the Democratic Services Officer on the above contact number or email democratic.services@trafford.gov.uk

Members of the public may also film or record this meeting. Any person wishing to photograph, film or audio-record a public meeting is requested to inform Democratic Services in order that necessary arrangements can be made for the meeting. Please contact the Democratic Services Officer 48 hours in advance of the meeting if you intend to do this or have any other queries.

This page is intentionally left blank

Document Pack Page 1
Trafford Covid-19 Public Engagement Board

Wednesday 15th December 2021 – 10:00 a.m. – Virtual meeting

Present:

Councillor Freeman (Chair)	Executive Member for Covid-19 Recovery and Reform
Councillor Newgrosh	Member of the Health Scrutiny Committee, Trafford Council
Councillor Acton	Chair of the Overview and Scrutiny Committee, Trafford Council
Councillor Blackburn	Ward Councillor, Trafford Council
Councillor Lloyd	Member of the Health Scrutiny Committee, Trafford Council
Helen Gollins	Consultant in Public Health, Trafford Council
Nigel Smith	Head of Regulatory Services, Trafford Council
Catherine O'Connor	Community Engagement Manager, Trafford Council
Kirsty Johnson	Covid-19 Project Manager, Trafford Council
Ellie Caddick	Covid-19 Communications Lead, Trafford Council
Khan Moghal	Chair, Voice of BME Trafford
Andrew Latham	Chief Officer, HealthWatch Trafford
Ben Wilmott	Covid-19 Senior Project Manager, Trafford Council
Jilla Burgess-Allen	Consultant in Public Health, Trafford Council
Louise Wright	Sport Relationship Manager, Trafford Council
Jamie Oliver	Communications and Engagement Specialist, Trafford Council
Mark Jarvis	Medical Director, Trafford CCG
Molly Shaw	Governance Services, Trafford Council
Alexander Murray	Governance Officer, Trafford Council

	Item	Decision / Action	Key Person for Action
1.	Welcome and apologies	Apologies were received from George Devlin and Councillor Welton.	
2.	Minutes	The minutes of the meeting 1 st December 2021 were agreed as an accurate record.	
3.	Membership	There had been no changes to the Membership since the last meeting.	
4.	Update on the current Covid-19 situation in Trafford	<p>The Board agreed to note the update.</p> <p>The following messages were shared with the Board:</p> <ol style="list-style-type: none"> 1. The rates across Trafford were increasing with rates at 664 per 100,000; 2. Trafford had the highest rates across Greater Manchester and the North West; 3. 0-14 and 30-44 year olds had the highest rates; 4. The rates in over 60s had increased to 135 per 100,000; 5. Hospitalisation and death rates had remained stable; 6. Timperley, Altrincham and Village wards had the 	All

		<p>highest rates across Trafford;</p> <ol style="list-style-type: none"> 7. There had been a few concerned Omicron cases identified in Trafford and there were possible Omicron cases across the borough; 8. Care home visits indoors for under 16 year olds had been resumed for the Christmas period but visits should be done as safely as possible; 9. People needed to take additional care (even if vaccinated) by avoiding crowded places, meeting people outdoors where possible, wearing a mask, keeping up with hand hygiene, and working from home if able. 	
5.	10POINT ACTION PLAN		
5a.	Mass Testing	<p>The Board agreed to note the update. The following messages were shared with the Board:</p> <ol style="list-style-type: none"> 1. Trafford had the highest testing rates across Greater Manchester; 2. That contacts of possible or confirmed cases of any variant of Covid-19 do not have to isolate if fully vaccinated. However if unvaccinated or under 18 it is advised to take daily lateral flow tests in this case; 3. That demand for lateral flow tests had increased due to the new restrictions but there was no issue in supply of lateral flow tests; 4. That you no longer needed a code to collect lateral flow tests from pharmacies and if none were available in pharmacies they would be available in community hubs; 5. That it was important to plan ahead and take a Lateral Flow test if: <ol style="list-style-type: none"> a. Visiting elderly people b. Visiting a crowded place c. Attending work or school 6. To encourage people to get PCR tests when experiencing any symptoms; 7. Testing at home twice weekly with Lateral Flow tests should continue. 	All
5b.	Contact Tracing and Outbreak Management	<p>The Board agreed to note the update. The following messages were shared with the Board:</p> <ol style="list-style-type: none"> 1. There were more primary schools than secondary schools meeting outbreak thresholds; 2. There had been an increase in cases in workplace settings; 3. There was a couple of current outbreaks in care homes; 	All

		<ol style="list-style-type: none"> 4. That Omicron was predicted to be the dominant variant over the next few days which meant the changes in guidance applied to all variants: <ol style="list-style-type: none"> a. Daily lateral flow testing for contacts of a positive case if double vaccinated; b. Under 5s don't have to isolate or take lateral flow tests but a PCR is encouraged; c. Unvaccinated people over 18 need to isolate if a contact of a positive case; 5. The team had followed up a very high number of Level 2 cases over the past week; 6. Self-isolation support was still being offered to the community; 7. The importance of undertaking full contact tracing when testing positive for Covid-19. 	
5c.	Mass Vaccination	<p>The Board agreed to note the update. The following messages were shared with the Board:</p> <ol style="list-style-type: none"> 1. That around 80% of eligible people were now double vaccinated; 2. 67,000 people were eligible for their booster by the end of December; 3. The aim was to vaccinate 4,000 people a day across Trafford using existing vaccination centres; 4. The 15 minute wait after having a booster jab was no longer necessary; 5. That GPs had been asked to defer non urgent work until the new year to focus on the booster vaccine roll out; 6. That vaccinations would be offered outside of core hours such as evenings and weekends. 	All
5d.	Update and escalations from the COVID-19 Community Engagement Group	<p>The Board agreed to note the update. The following messages were shared with the Board:</p> <ol style="list-style-type: none"> 1. That people were able to register to be a community volunteer through communityengagement@trafford.gov.uk; 2. 119 surveys had been completed by members of the public to gain key insights into why people were unvaccinated; 3. That new messaging was being sent out around Omicron and how to continue to be 'Covid safe'; 4. Focus groups would be continued in the New Year to gain insight into how communities feel about Covid-19. 	N/A
5e.	Update and	The Board agreed to note the update.	

	escalations from COVID-19 Community Enforcement	<p>The following messages were shared with the Board:</p> <ol style="list-style-type: none"> 1. That it was a requirement for indoor public facing areas and public transport to display a sign enforcing the wearing of a face covering; 2. Local Authorities and businesses cannot take enforcement action on individuals who do not comply with current rules and that this enforcement lies with the Police; 3. Local Authorities have the power to take action on businesses who haven't displayed a face covering sign or if they prevent anyone from wearing a face covering; 4. There has been a very low number of complaints made; 5. That the Covid Pass had started and over 18s had to show proof of vaccination or a negative test in certain settings. 	
6.	Public Engagement Board Activity and Feedback	None	
7.	Any Other Business	None.	
8.	Date of Next Meeting	Wednesday 12 th January 2022 at 10:00 a.m.	

Public Engagement Board

COVID-19 Programme Team

CLT Lead: Helen Gollins, Director Public Health Trafford

12 January 2022

Data surveillance update paper to Public Engagement Board

Report Summary:

This paper provides an update on the current data position for COVID-19 within Trafford and provides comparative information with other GM localities. Data insights into any potential trends are provided based on best available public health information and intelligence available.

Overview of the current position:

Overview

- There were **4837** confirmed cases during the week ending Wednesday 5 January 2022, with the highest number of cases (**865**) reported on **Tuesday 4 January**.
- Our 7 day case rate has decreased slightly to **2036/100k** from **2056.6/100k** in the previous week. We don't expect to see much change in our case rate over the coming days.
- Trafford's case rate is below the North West (**2297/100k**) but above the England average (**1821.7/100k**). Trafford has the 2nd lowest case rate across the 10 GM boroughs and is the only borough in the NW to see a reduction in its rate from the previous week.
- Trafford's testing rate has decreased (at **774/100k** from **1094/100k**), whilst our positivity rate has increased (at **40.5%** from **24.5%**) from the previous week. Please note that testing and positivity data is for the 7 days up to December 31st due to a lag in testing data.

Age Profiles

- Case rates have dropped slightly for 0-44 year olds, but have increased for residents 45+.
- Case rates remain highest for 30-44 (at **2784.3/100k**) and 15-29 year olds (**2749.6/100k**), well above the Trafford average.
- We have seen a further rate increase for residents aged 60+ (at **1371.1/100k** from **1195.1/100k** in the previous week).
- PCR testing rates had been dropping for all age groups, however there are signs that the number of residents getting tested is increasing.

Geography

- We are starting to see case rates drop for certain wards, however cases are widespread across the whole borough as each ward has a case rate greater than **1500/100k**.
- Case rates are currently highest in the West of the borough, but have started to increase for Wards in the South of the borough.
- Case rates are highest for the wards of Flixton (**2495.1/100k**), Timperley (**2474.9/100k**), Davyhulme East (**2473.7/100k**), Davyhulme West (**2267.7/100k**), Urmston (**2263.9/100k**), and Broadheath (**2236.6/100k**).

Hospital Activity

- We have seen a substantial increase in local hospital admissions associated with COVID-19 over the past week (7 days up to January 2nd). This is also a regional and national trend.
- There were **528** COVID-19 admissions during the week ending Sunday 02 January 2022 compared with **284** COVID-19 admissions during the previous week (Including Manchester University Foundation Trust, Stockport Foundation Trust, and Warrington & Halton Teaching Hospitals Foundation Trust).

Public Health Concern

We are currently in a period where the risk of COVID-19 transmission is at its highest, since the beginning of the pandemic. As of the 7 days up to January 4th, Trafford recorded its highest ever case rate, at **2220.3/100k**. The proportion of cases that are linked to the Omicron variant are growing on a daily basis; this variant is highly transmissible, and is now the dominant variant (succeeding the delta variant).

Nationally, case rates are highest across the North West boroughs, having previously been highest for boroughs in Greater London over the Christmas period. Trafford currently has the 2nd lowest case rate across the 10 GM boroughs, highest for the borough of Wigan (**2557.8/100k**). Contrasting to the October period where transmission was highest for Trafford's school age population, our current spike has been driven by a sharp rise in cases for the young adult population (18-44). However, Trafford's COVID response team is working closely with schools in anticipation of a rise in school-age cases. Of greatest concern over the past 3 weeks is the sharp rise in cases amongst our 60+ population. Although 60+ case rates are similar to our neighbouring GM boroughs, a 7-day case rate in excess of 1000/100k is the highest we've experienced for our 60+ residents.

COVID-19 vaccinations continue to provide the most effective protection against COVID-19 infection and the link with hospital admissions/COVID-19 mortality. However, taking into account the high rate of transmission over the past 4 weeks, we have started to see substantial increases in the number of COVID-19 hospital admissions. Local COVID-19 admissions (see figure 1 below) have increased by 86% for the 7 days up to

January 2nd, whilst we are likely to see further increases in the coming week. We have also started to see an increase in care home outbreaks.

The announcement by the PM on 12/12/21 confirmed that the OMICRON variant is highly transmissible and appears to be evading immunity. Early data suggests that getting a third booster dose gives an individual around 70% to 75% protection against symptomatic infection from Omicron. Trafford's vaccination programme were able to deliver over 60,000 booster vaccinations throughout December; we encourage all eligible resident to receive their booster vaccination, to help increase protection from COVID-19 transmission and severe complications.

Outbreak Management and Risk Reduction

Business settings

- Face coverings are compulsory in shops and other settings such as banks, post offices and hairdressers, as well as on public transport unless individuals are exempt from doing so.
- We continue to urge all businesses to make their workplaces COVID-19 secure, including ensuring that staff are routinely testing and properly protected when they return to the workplace.
- We continue to promote the importance of COVID-19 vaccinations for all eligible populations.

Health & Social Care Settings

- We need to work together to keep our most vulnerable populations protected. We are managing outbreaks in care homes. While some fully vaccinated staff and residents are testing positive, their disease is much milder than in unvaccinated people.
- Care homes should continue to PCR test residents and staff every 28 days, and staff should also do twice weekly LFD testing.
- Vaccination remains a safe and effective method of protecting yourself from severe illness.
- We will be encouraging all health and social care settings to continue to use all the current infection prevention and control measures to keep staff and service users safe.
- Care Homes are being supported to implement safe visiting over the coming weeks.

Education & Early Years Settings

- Secondary school pupils should continue with twice weekly LFD testing and all staff/pupils should wear face coverings in communal areas and class rooms.
- We'd like to encourage people to register negative LFD test results on the national testing portal.
- Close contacts should do daily LFD testing for 7 days.

Contact Officer:

Name: Tom Seery, Public Health Data Surveillance Analyst

Tel: 07929876642

Email: Thomas.seery@trafford.gov.uk

1.0 Vulnerable Population groups

1.1 We have seen a substantial increase in the number of residents aged 60+ testing positive over the past 3 weeks.

1.2 Table 1 shows that 60+ rates are high for each of Trafford's 4 localities, indicating spread is borough-wide.

Table 1. Seven-day case rate for residents aged 60+ by locality

Trafford, 23 December 2021 to 5 January 2022

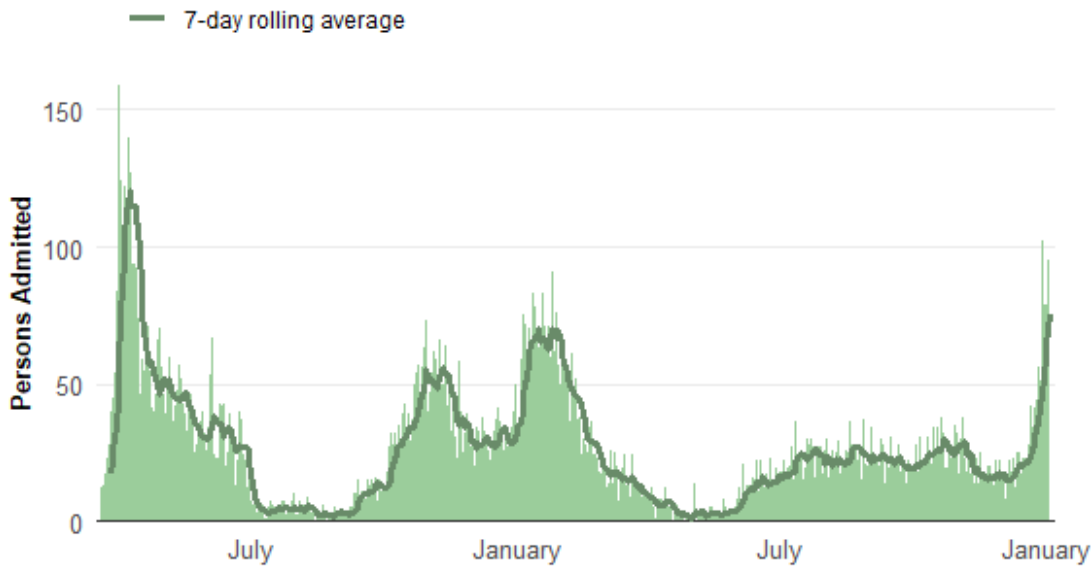
	Previous Week	Current Week	Percentage Change
North	1086.4	1700.5	-56.5%
West	1406.5	1539.0	9.4%
South	1130.1	1362.3	-20.5%
Central	1089.7	1281.6	17.6%

1.3 COVID-19 hospital admissions having been increasing since mid-December, whilst the most recent 7 days (up to January 2nd) shows a more substantial rise in admissions.

1.4 Current COVID-19 hospital admissions closely resemble those in January 2021.

1.5 We are also seeing a similar trend in increasing hospital admissions for the North West region.

Figure 1. Daily Count of COVID-19 Hospital Admissions (including *Manchester University Foundation Trust, Stockport Foundation Trust, and Warrington & Halton Teaching Hospitals Foundation Trust*).
19 March 2020 to 2 January 2022

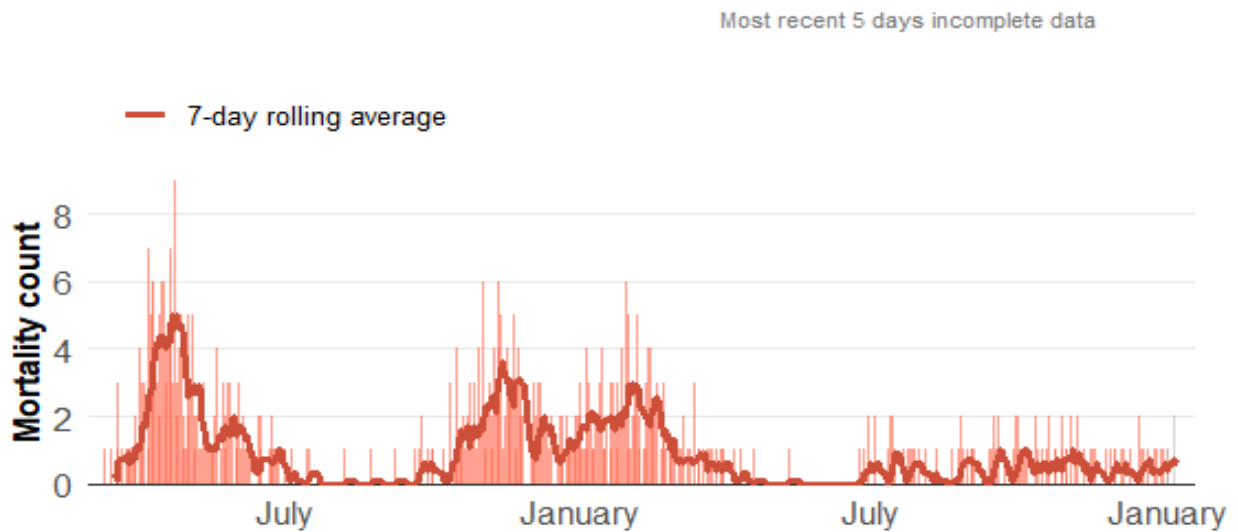


Source: PHE Coronavirus Dashboard

1.6 We have seen little change in the number of deaths linked to COVID-19 over the past 5 months.

1.7 There were **7** deaths for Trafford residents testing positive from COVID-19 in the 14 days up to Saturday 8 January 2022. There were **6** deaths for Trafford residents in the 14 days up to Saturday 25 December 2021.

Figure 3. Daily Count of COVID-19 deaths within 28 days of positive test result
11 March 2020 to 8 January 2022



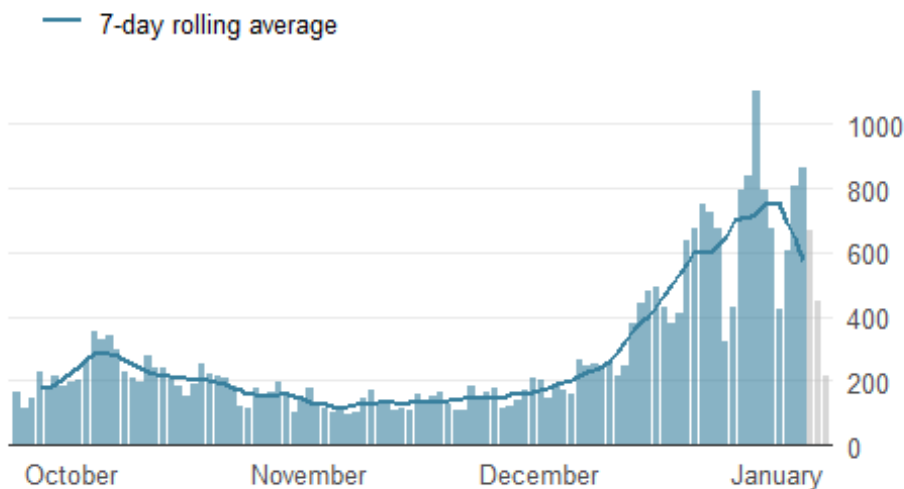
2.0 Trend of COVID-19 cases within Trafford

2.1 The proportion of cases attributed to the Omicron variant saw a substantial increase throughout December, leading to an exponential rise in daily cases, recording over **1,000** cases on December 29th.

2.2 We don't expect to see much change in our case rate over the coming days, however we may start to see an increase in cases as a result of increased testing among the school-age population.

Figure 3. Epidemic curve of daily confirmed new cases

Trafford, 24 September 2021 to 7 January 2022



3.0 Age profiles

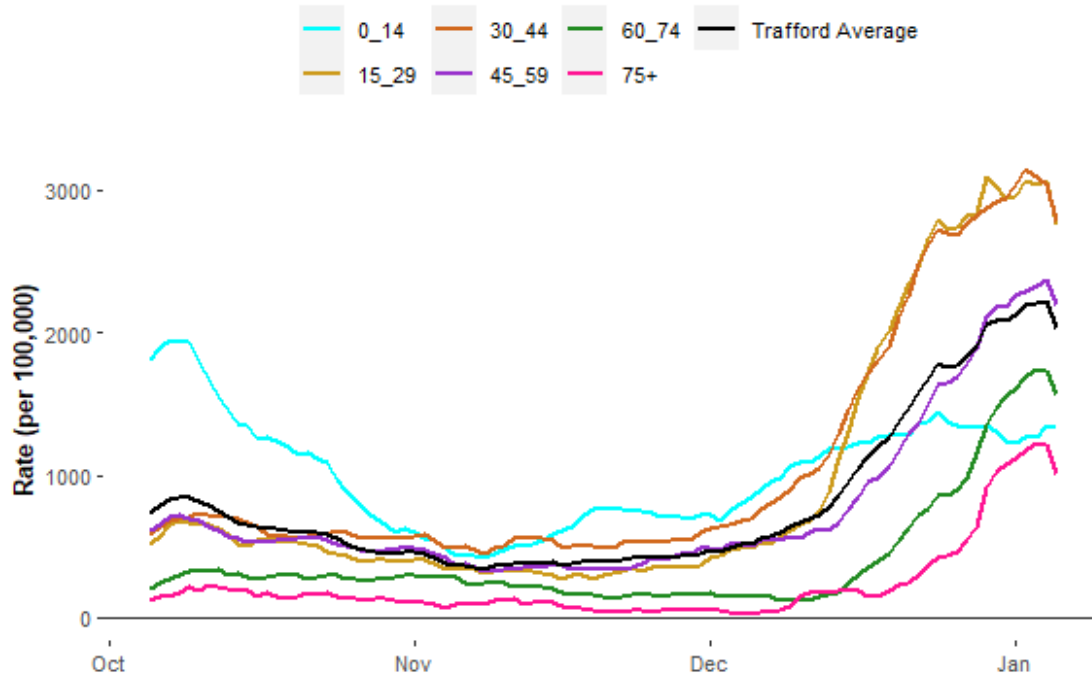
3.1 Case rates for all age groups are similar to the previous week, however most recent two days shows a slight drop in daily cases.

3.2 Case rates remain highest for 30-44 (at **2784.3/100k**) and 15-29 year olds (**2749.6/100k**), well above the Trafford average.

3.3 Case rates remain worryingly high for residents aged 60+ (at **1371.1/100k** from **1195.1/100k** over the most recent week), but similar to the 60+ case rate for the other 10 GM boroughs.

Figure 4. Age-specific case rates per 100,000 population Trafford, 7-day moving average)

Trafford, 7 October 2021 – 5 January 2022



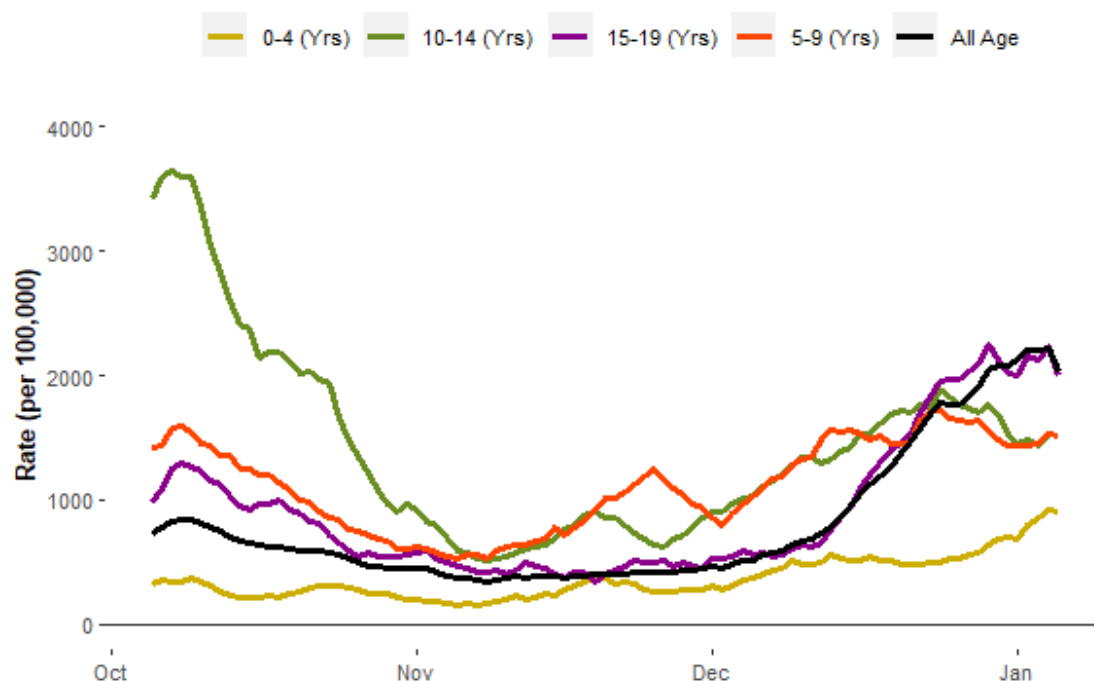
3.4 Case rates for each of the 5-year school age groups are below the Trafford average.

3.5 Case rates are similar or have dropped slightly from the previous week for 5-19 year olds, but have increased for 0-4 year olds.

3.6 Case rates remain highest for 15-19 year olds (at **2002.9/100k** from **2245.0/100k** in the previous week).

Figure 5. School case rate per 100,000 residents (7-day moving)

Trafford, 7 October 2021 to 5 January 2022



4.0 Geographical spread of COVID-19 in Trafford

4.1 We are seeing cases spread across the borough, increasing for 9 wards and dropping for 12 wards.

4.2 Rates remain highest in the West of the borough, however we are starting to see rates increase for parts of Trafford South (Timperley and Broadheath).

4.3 Case rates are highest for the wards of Flixton (**2495.1/100k**), Timperley (**2474.9/100k**), Davyhulme East (**2473.7/100k**), Davyhulme West (**2267.7/100k**), Urmston (**2263.9/100k**), and Broadheath (**2236.6/100k**).

4.4 Case rates have increased most for the wards of Timperley (**+36.6%**) and Broadheath (**30.3%**) when compared to the previous week.

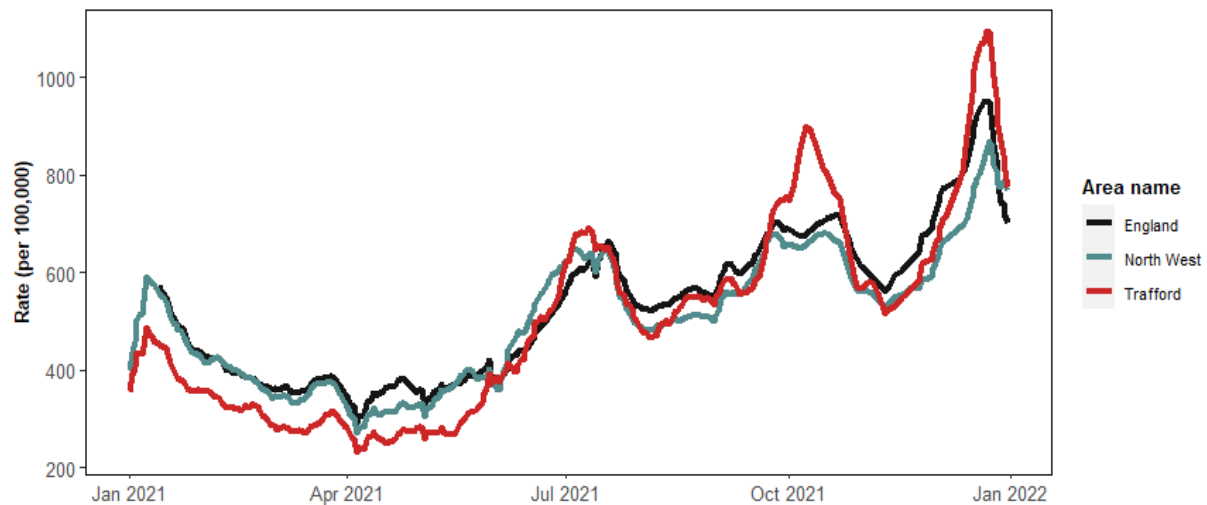
5.0 PCR Testing

5.1 Trafford reached its highest ever daily testing rate (**1095/100k**) on December 22nd, exceeding the England and North West averages for that time period.

5.2 We have since seen a sharp reduction in testing, dropping below **780** daily tests per 100,000 residents, and more closely resembling the North West average.

5.3 We currently have the 2nd highest testing rate (**774.4/100k**) across the 10 GM boroughs.

Figure 6. Daily testing rate (7-day average): England, North West, & Trafford
Trafford, 1 January 2021 to 31 December 2021



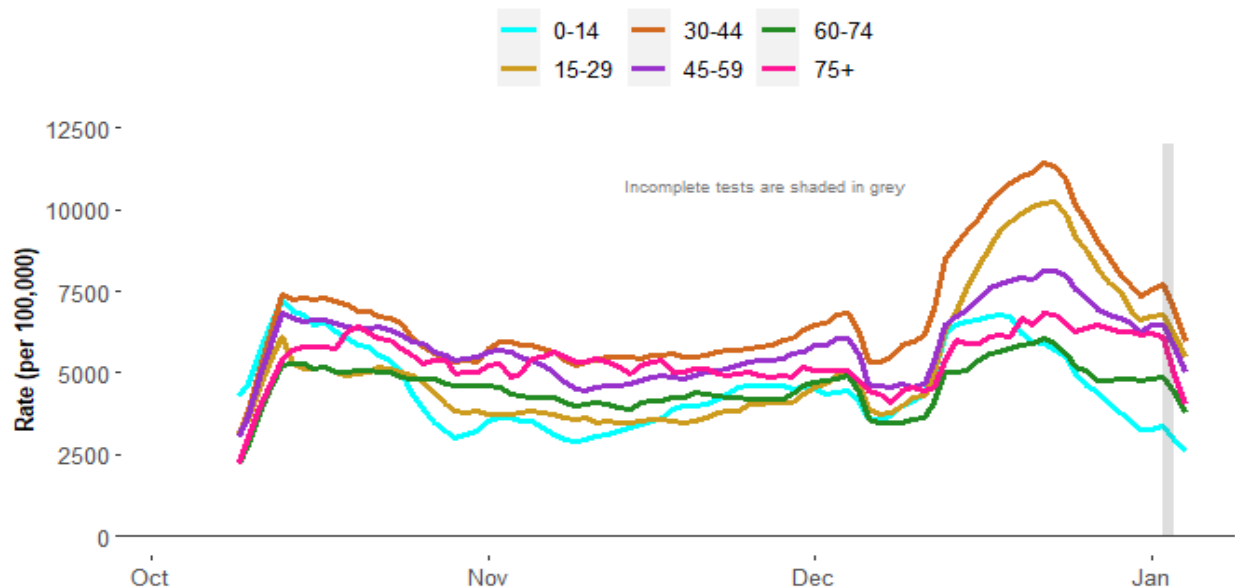
5.5 When compared to the previous week, 7-day testing rates have dropped for all age groups, although we are starting to see a slight increase in testing among all age groups for the most recent two days (2-3 January).

5.6 We saw a sharp rise in testing among 15-44 year olds throughout mid-late December, which mirrors the high case rates for this age group.

5.7 PCR testing remains highest for 30-44 years olds (**6937.8/100k**) and 15-29 year olds (**6179.8**).

Figure 7. Age-Specific Testing rate per 100,000 residents (7-day moving)

Trafford, 9 October 2021 to 3 January 2022



6.0 Positivity

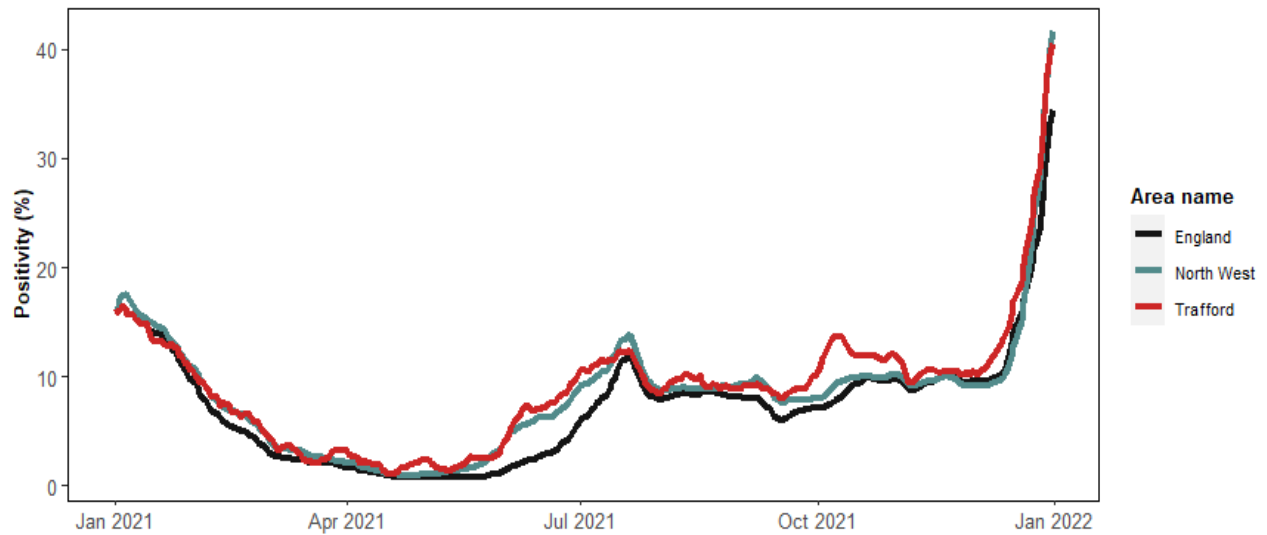
6.1 National positivity rates experienced an exponential rise in mid-December.

6.2 Trafford's positivity rate has closely resembled the England and North West averages over the past two weeks.

6.3 Trafford's current positivity rate (**40.5%**) is an increase of **145%** from its previous high (**16.5%**) in January 2021.

6.4 Trafford now has the lowest positivity rate across the 10 GM boroughs.

Figure 8. 7-day Positivity rate: England, North West, & Trafford
Trafford, 1 January 2021 to 31 December 2021



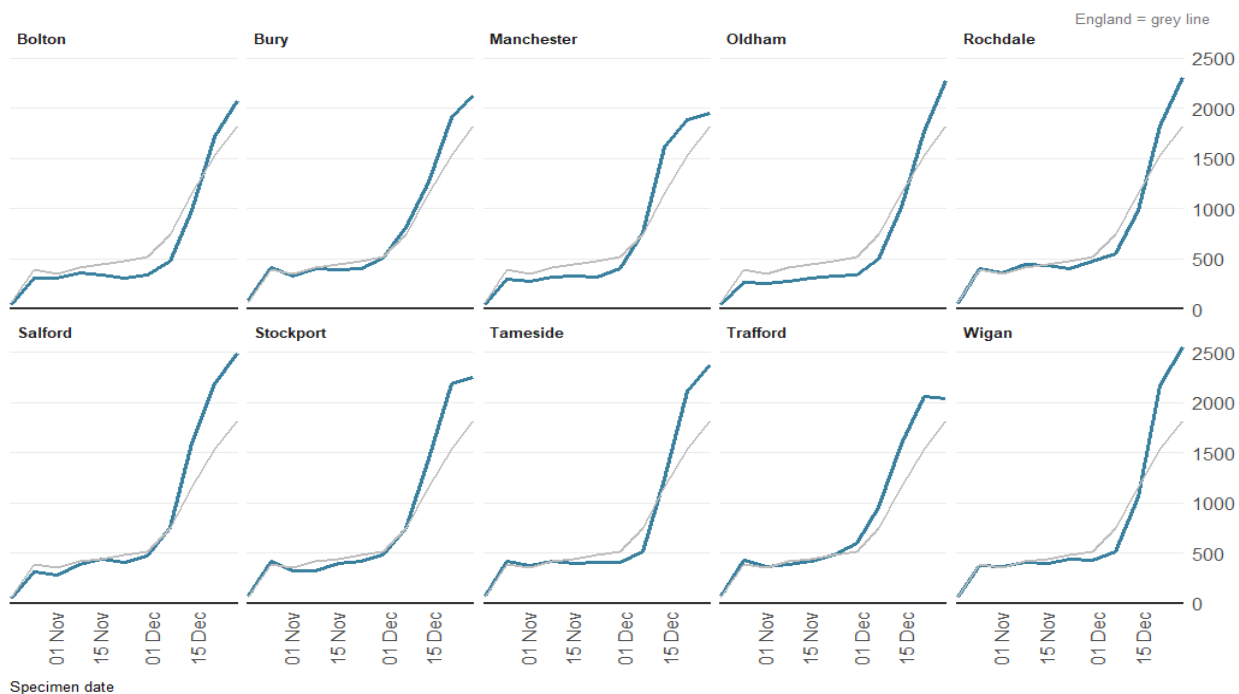
7.0 Comparative data of COVID-19 cases within the local authorities of Greater Manchester

7.1 Among the 10 GM boroughs, Trafford saw the earliest rise in its case rate during the current wave in Omicron cases.

7.2 The most recent week shows that Trafford's rate is starting to level-off, whilst rates are continuing to increase for most other GM boroughs.

7.3 Trafford has the 2nd lowest case rate across the GM boroughs.

Figure 9. Weekly incidence per 100,000 population by local authority
Greater Manchester, 30 October 2021 to 5 January 2022



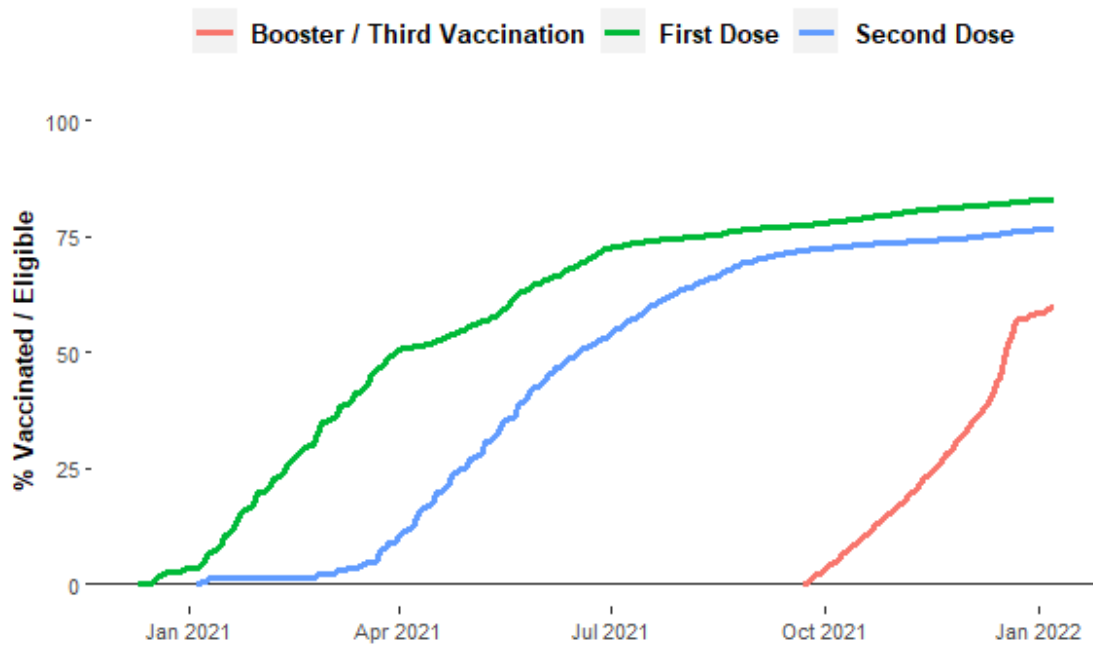
8.0 Vaccinations

8.1 The total percentage of Trafford residents (Aged 12+) administered their first vaccine dose on **Saturday 08-01-2022** was **83%**.

8.2 The total percentage of Trafford residents (Aged 12+) administered both vaccine doses on **Saturday 08-01-2022** was **76.8%**.

8.3 The total percentage of Trafford residents (All eligible) administered a third dose/booster vaccine on **Saturday 08-01-2022** was **59.9%**.

Figure 10. Running total of First, Second, and Third/Booster dose vaccines for Trafford, 09 December 2020 to 8 January 2022

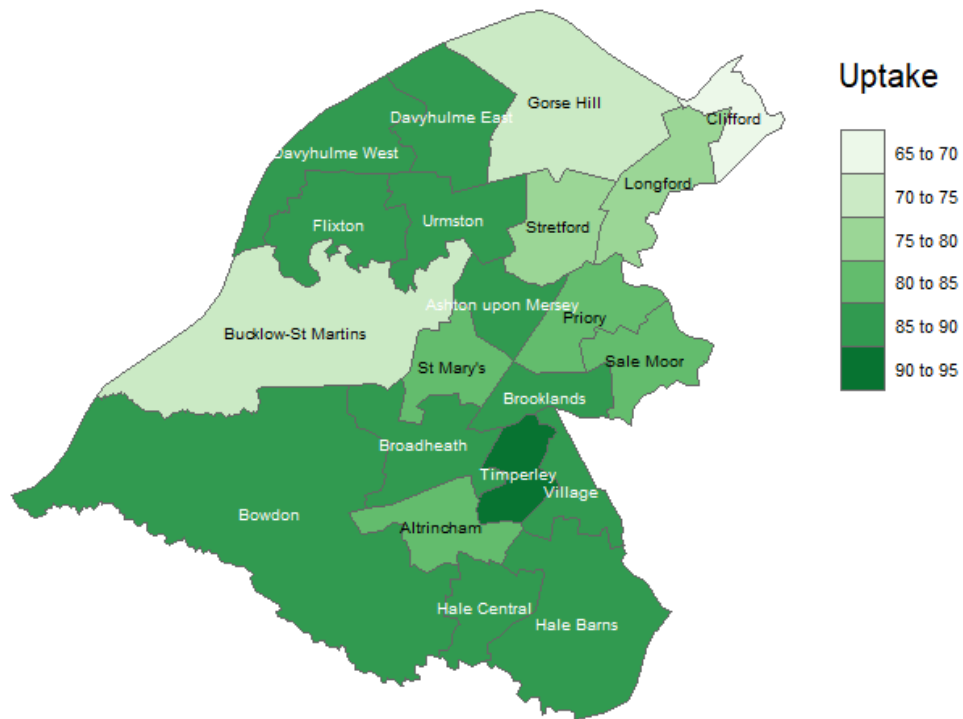


Source: COVID-19 Situational Awareness Explorer

8.3 Vaccine uptake is lowest In Trafford North and highest for Trafford South.

8.4 We are seeing variation in vaccine uptake (first dose) across the borough, ranging from 64.6% (Clifford ward) to 90.4% (Timperley ward).

**Figure 11. First dose vaccine uptake (%) for all eligible residents (12+) by Ward
Trafford, up to 10 January 2022**



This page is intentionally left blank