



TRAFFORD COUNCIL

AGENDA PAPERS FOR TRAFFORD COVID-19 PUBLIC ENGAGEMENT BOARD

Date: Wednesday, 9 February 2022

Time: 10.00 am

Place: Virtual meeting:

<https://www.youtube.com/channel/UCjwblOW5x0NSe38sgFU8bKg>

A G E N D A	PART I	Pages
1. ATTENDANCES		
To note attendances, including officers, and any apologies for absence.		
2. DECLARATIONS OF INTEREST		
Members to give notice of any interest and the nature of that interest relating to any item on the agenda in accordance with the adopted Code of Conduct.		
3. MINUTES		1 - 4
To receive and, if so determined, to approve as a correct record the Minutes of the meeting held on 26 th January 2022.		
4. UPDATE ON THE CURRENT COVID-19 SITUATION IN TRAFFORD		5 - 24
To receive an update from the Acting Director of Public Health.		
5. 10 POINT PLAN UPDATE		
(a) Mass Testing		
To receive a verbal update from the Strategic Testing Lead.		
(b) Contact Tracing and Outbreak Management		
To receive a verbal update from the Covid-19 Project Manager.		
(c) Mass Vaccination		
To receive a verbal update from the Deputy Medical Director, Trafford		

CCG.

(d) **Community Engagement**

To receive a verbal update from Regulatory Services.

6. **PUBLIC ENGAGEMENT BOARD ACTIVITY**

For all Board Members to provide updates on any activity pertaining to the remit of the Board not covered elsewhere on the agenda.

7. **ANY OTHER BUSINESS**

To consider any other items of business not on the agenda which need to be considered by the Board before the next confirmed meeting.

SARA TODD

Chief Executive

Membership of the Committee

Council Leader or named Elected Member, nominated leads from opposition parties
VCSE representatives – including specialists relating to key population groups (older people; BAME; children; mental health , Learning Difficulties), Partnerships lead, Communications lead, Director of Public Health, Director of Adult Social Services, Director for Children’s Services, Neighbourhood representatives, Clinical Commissioning Group representative, Trafford Local Care Organisation representative, Healthwatch Representative

Further Information

For help, advice and information about this meeting please contact:

Molly Shaw,
Tel: 07890032570
Email: molly.shaw@trafford.gov.uk

This agenda was issued on **8th February 2022** by the Legal and Democratic Services Section, Trafford Council, Trafford Town Hall; Talbot Road, Stretford, Manchester, M32 0TH

WEBCASTING

This meeting will be filmed for live and / or subsequent broadcast on the Council’s website and / or YouTube channel <https://www.youtube.com/user/traffordcouncil>
The whole of the meeting will be filmed, except where there are confidential or exempt items.

If you make a representation to the meeting you will be deemed to have consented to being filmed. By entering the body of the Committee Room you are also consenting to being filmed and to the possible use of those images and sound recordings for

Trafford Covid-19 Public Engagement Board - Wednesday, 9 February 2022

webcasting and/or training purposes. If you do not wish to have your image captured or if you have any queries regarding webcasting of meetings, please contact the Democratic Services Officer on the above contact number or email democratic.services@trafford.gov.uk

Members of the public may also film or record this meeting. Any person wishing to photograph, film or audio-record a public meeting is requested to inform Democratic Services in order that necessary arrangements can be made for the meeting. Please contact the Democratic Services Officer 48 hours in advance of the meeting if you intend to do this or have any other queries.

This page is intentionally left blank

Document Pack Page 1
Trafford Covid-19 Public Engagement Board

Wednesday 26th January 2022 – 10:00 a.m. – Virtual meeting

Present:

Councillor Freeman (Chair)	Executive Member for Covid-19 Recovery and Reform
Councillor Newgrosh	Member of the Health Scrutiny Committee, Trafford Council
Councillor Lloyd	Member of the Health Scrutiny Committee, Trafford Council
Councillor Welton	Ward Councillor, Trafford Council
Helen Gollins	Acting Director of Public Health, Trafford Council
Khan Moghal	Chair, Voice of BME Trafford
Andrew Latham	Chief Officer, HealthWatch Trafford
Dorothy Evans	Voluntary, African Caribbean Care Group
George Devlin	Lay Member for Patient and Public Participation, Trafford CCG
Ben Wilmott	Covid-19 Senior Project Manager, Trafford Council
Jilla Burgess-Allen	Consultant in Public Health, Trafford Council
Mark Jarvis	Medical Director, Trafford CCG
Danny Zammit	Strategic Neighbourhood Lead, Trafford Council
Molly Shaw	Governance Services, Trafford Council
Alexander Murray	Governance Officer, Trafford Council

	Item	Decision / Action	Key Person for Action
1.	Welcome and apologies	Apologies were received from Councillor Cordingley and Ellie Caddick.	
2.	Minutes	The minutes of the meeting 12 th January 2022 were agreed as an accurate record.	
3.	Membership	There had been no changes to the Membership since the last meeting.	
4.	Update on the current Covid-19 situation in Trafford	<p>The Board agreed to note the update.</p> <p>The following messages were shared with the Board:</p> <ol style="list-style-type: none"> 1. The rates across Trafford had decreased with rates at 867.9 per 100,000; 2. Trafford had the third highest rates across Greater Manchester; 3. The positivity rate was 20%; 4. 0-14 and 30-44 year olds had the highest rates; 5. The rates in over 60s had increased to 379 per 100,000; 6. Broadheath, Ashton upon Mersey, Bucklow St Martins, Brooklands and Village wards had the highest rates across Trafford; 7. In Primary schools, testing rates were low but positivity rates were high; 8. The number of Covid-19 related admissions into 	All

		<p>hospitals across Greater Manchester had declined;</p> <p>9. The importance of registering results of Lateral Flow tests regardless of the result;</p> <p>10. People needed to take additional care (even if vaccinated) by avoiding crowded places, meeting people outdoors where possible, wearing a mask, keeping up with hand hygiene, and working from home if able.</p>	
5.	10POINT ACTION PLAN		
5a.	Mass Testing	<p>The Board agreed to note the update.</p> <p>The following messages were shared with the Board:</p> <ol style="list-style-type: none"> 1. It is now possible to end self-isolation early following 2 negative Lateral Flow tests taken on day 5 and day 6, 24 hours apart; 2. That demand for Lateral Flow tests is still high but they should be available from Stretford, Urmston, Altrincham and Sale Libraries; 3. That it was important to plan ahead and take a Lateral Flow test if: <ol style="list-style-type: none"> a. Visiting elderly people b. Visiting a crowded place c. Attending work or school 4. To encourage people to get PCR tests when experiencing any symptoms; 5. Testing at home twice weekly with Lateral Flow tests should continue. 	All
5b.	Contact Tracing and Outbreak Management	<p>The Board agreed to note the update.</p> <p>The following messages were shared with the Board:</p> <ol style="list-style-type: none"> 1. There were 23 primary schools meeting outbreak thresholds; 2. There were 3 secondary schools meeting outbreak thresholds; 3. The local Contact Tracing team had received 3600 Level 2 cases to follow up since Christmas; 4. There had been a dip in the completion rate of full contact tracing due to the volume of referrals however Trafford had the 2nd highest completion rate across Greater Manchester; 5. The self-isolation pathfinder evaluation was ongoing; 6. To be able to claim the £500 self-isolation support you must have a confirmatory PCR test within the 10 day self-isolation period; 7. The importance of undertaking full contact tracing when testing positive for Covid-19. 	All

5c.	Mass Vaccination	<p>The Board agreed to note the update. The following messages were shared with the Board:</p> <ol style="list-style-type: none"> 1. 30,000 people were vaccinated in 3 weeks of December; 2. 82% of the eligible population have been boosted; 3. That you are eligible for a booster vaccination 28 days after being positive for Covid-19; 4. The rate of vaccination has dropped to around 2000 a week across Trafford; 5. There was targeted work being done in areas of low uptake to encourage residents to have their vaccinations. 	All
5d.	Update and escalations from the COVID-19 Community Engagement Group	<p>The Board agreed to note the update. The following messages were shared with the Board:</p> <ol style="list-style-type: none"> 1. The team were helping schools to boost the uptake of the 12-15 year old vaccine programme; 2. There was an upcoming art project where students would create art to capture their experience of the pandemic. 	All
6.	Public Engagement Board Activity and Feedback	None.	
7.	Any Other Business	None.	
8.	Date of Next Meeting	Wednesday 9 th February 2022 at 10:00 a.m.	

This page is intentionally left blank



Weekly External COVID-19 Data Briefing

Trafford Public Health Team

The reported week in these briefing slides cover the 7-day period between 28 January and 3 February 2022.

Epi Summary

Overview

- There were **1447** confirmed cases during the week ending Thursday 3 February 2022, with the highest number of cases (**242**) reported on **Sunday 30 January**.
- Our 7 day case rate has decreased to **609.1/100k** from **851.1/100k** in the previous week. We expect to see further reductions in our case rate over the coming days
- Trafford's case rate is below the North West (**685.4/100k**) and England (**938.6/100k**) average. Trafford has the 4th highest case rate across the 10 GM boroughs.
- Trafford's testing (at **377.3/100k** from **470.3/100k**) and positivity (at **13.5%** from **17.4%**) rates have dropped from the previous week.

Age Profiles

- We have seen a sharp drop in the number of positive cases among 0-14 and 30-44 year olds.
- Whilst Case rates are highest for 10-14 year olds (**966.4/100k**), they are dropping sharply from the previous week (**1567.4/100k**).
- There has been little change in positive cases for residents aged 60+ (at **357.6/100k** from **372.4/100k** in the previous week).
- PCR testing rates are dropping for all age groups. Testing remains highest among residents above the age of 74.

Geography

- We are seeing little variation in rates by Wards. Rates have dropped for all 21 wards when compared to the previous week.
- Case rates are highest for wards in Trafford's Central and South Localities.
- Case rates have dropped most for Wards in the North of the borough over the past week.

Hospital Activity

- We have seen further reductions in the number of local hospital admissions linked to COVID-19. This is also a national trend.
- There were **270** COVID-19 admissions during the week ending Sunday 30 January 2022 compared with **323** COVID-19 admissions during the previous week (*Including Manchester University Foundation Trust, Stockport Foundation Trust, and Warrington & Halton Teaching Hospitals Foundation Trust*).
- There was a slight increase in the number of deaths linked to COVID-19 at the end of January, however we haven't seen that continue into February.

Public Health Concern

We have seen a sharp reduction in our case rate over the past 10 days. We expect some further reductions in the coming days, but may start to see a levelling-off in our case rate over the coming weeks. As expected (due to isolation policy changes including changes to testing guidance), there has been a sharp reduction in resident testing since early January. Moving forward, this may have an effect on our understanding of data accuracy and trend analysis.

Post December 2021 has seen a visible increase in the number of COVID-19 re-infections. The Omicron variant seems to be a driving factor in these re-infections, indicating that people are still at risk of COVID-19 even if they have had the infection previously. We are keeping a close eye on the data to see if any noticeable trends are occurring throughout the borough.

COVID-19 vaccinations continue to provide the most effective protection against COVID-19 infection and the link with hospital admissions/COVID-19 mortality. We have seen a continued reduction in local hospital admission over the past 4 weeks. This is also national trend. Despite the substantial increase in hospital admissions throughout December and early January, we have not seen an increase in the number of COVID-19 admitted residents occupying mechanical ventilation beds; regionally, occupied ventilation beds are at their lowest since June 2021. This could be a positive indication of protective vaccine effects. There has been a slight increase in mortality linked to a positive COVID-19 cases over the past few weeks, however figures are well below levels of January and February 2021.

The Prime Minister announced the lifting of plan B restrictions on the 19th January, and with the potential for further COVID-19 policy restrictions, the local COVID-19 response team continues to focus on preventative measures, communicating COVID secure behaviors, and advising caution in high risk settings. We will also continue to mitigate COVID-19 risk among our vulnerable population groups.

Outbreak Management and Risk Reduction

Trafford's Outbreak and Contact Tracing Hub continues to work closely with all settings to monitor and support COVID-19 activity.

Business settings

- You no longer need to wear a face covering, but consider wearing one in crowded, enclosed spaces where you may come into contact with people you do not normally meet.
- We continue to urge all businesses to make their workplaces COVID-19 secure, including ensuring that staff are routinely testing and properly protected when they return to the workplace.
- We continue to promote the importance of COVID-19 vaccinations for all eligible populations.
- We are monitoring the impact of events on Covid rates in the borough.
- You no longer have to show your NHS COVID Pass at venues and events.

Health & Social Care Settings

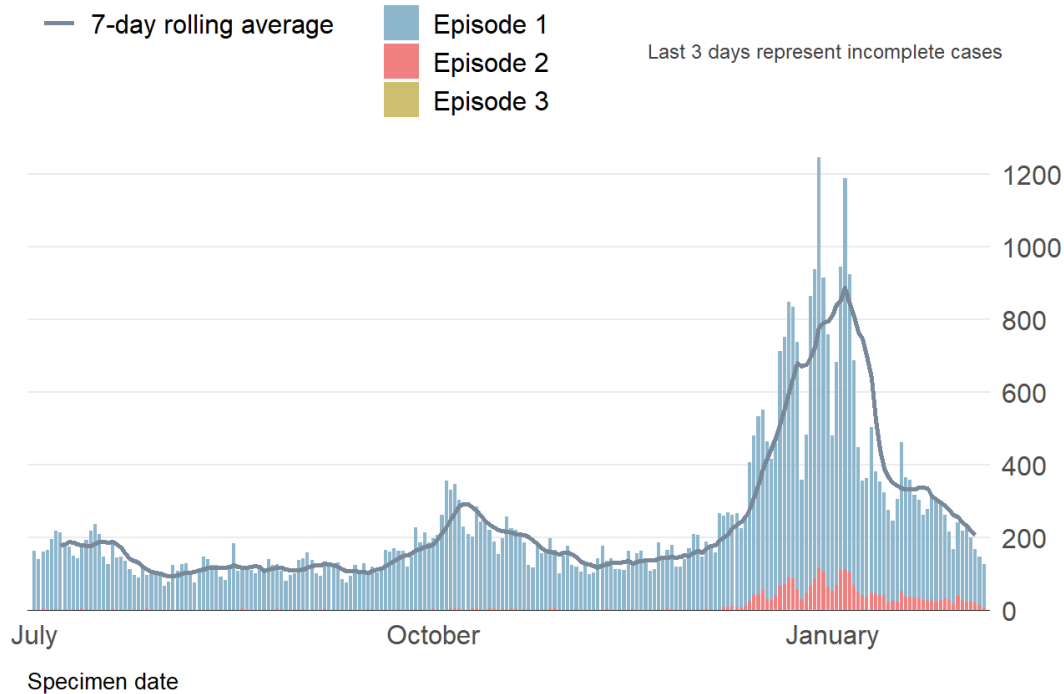
- From Monday 31st January - Reducing visiting restrictions for residents:
 - There will be no limit on the number of visitors a resident can have and no requirements to test or isolate after visits out (providing these visits are not deemed to be “high risk”).
 - The isolation period will be reduced from 14 days to a maximum period of 10 days
- By Wednesday 16th February
 - Changing the asymptomatic staff testing regime for all staff in adult social care to pre-shift lateral flow tests and removing PCR testing.
 - PCR testing will continue for regular monthly care home resident testing and outbreak testing, other staff testing (e.g. when symptomatic or when a contact) as well as in all Vivaldi research care homes.
 - Detailed arrangements will be set out in updated guidance, which have recently been published.
- We need to work together to keep our most vulnerable populations protected. We are managing outbreaks in care homes. While some fully vaccinated staff and residents are testing positive, their disease is much milder than in unvaccinated people.
- If there are two or more linked cases in a care home setting, this should trigger whole home testing.
- Vaccination remains a safe and effective method of protecting yourself from severe illness.
- We will be encouraging all health and social care settings to continue to use all the current infection prevention and control measures to keep staff and service users safe.
- Care Homes are being supported to implement safe visiting over the coming weeks.

Education & Early Years Settings

- Secondary school pupils and staff should continue with twice weekly LFD testing.
- The requirement for face coverings has been removed, however they may still be recommended in an outbreak situation.
- We would like to encourage people to register negative LFD test results on the national testing portal.
- Close contacts should do daily LFD testing for 7 days.

Trend

Figure 1. Epidemic curve of daily confirmed new cases in Trafford (1 July 2021 to 5 February 2022)



Source: PHE Covid-19 Situational Awareness Explorer

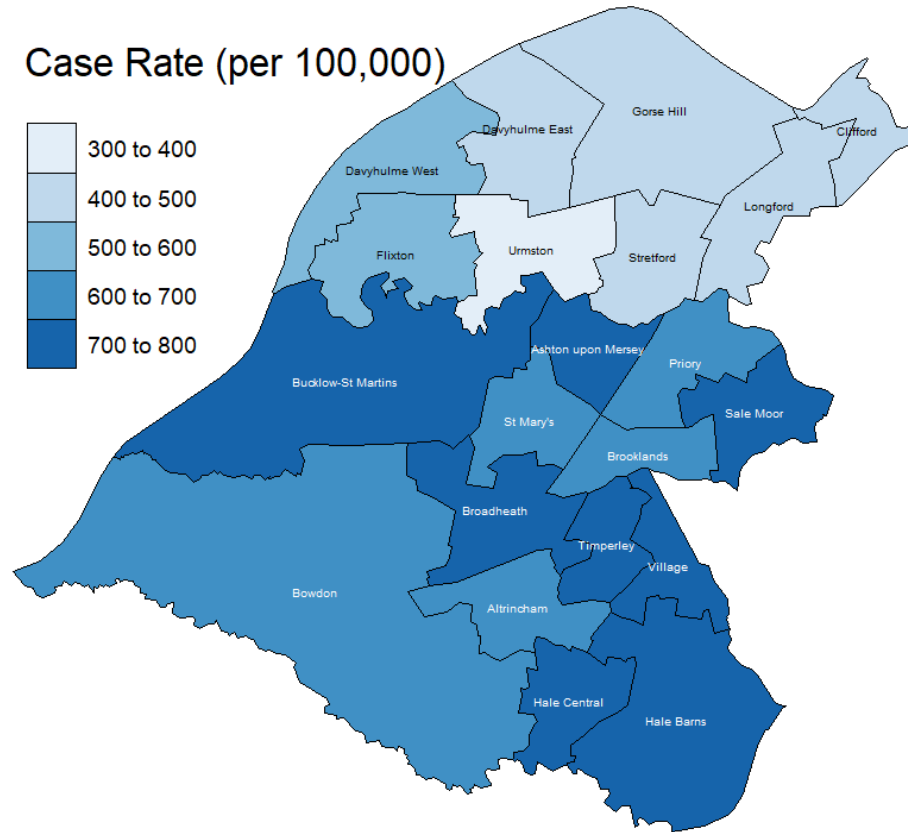
Summary Context:

Total daily cases have been dropping since January 5th; we expect further reductions over the coming days. Post December 2021 shows a growing proportion of COVID-19 reinfections ('Episode'). Please see link below for further information on COVID-19 reinfections.

[Changing the COVID-19 Case Definition - UK Health Security Agency \(blog.gov.uk\)](https://www.blog.gov.uk/2022/01/20/changing-the-covid-19-case-definition/)

Geography

Figure 2. Incidence per 100,000 population by MSOA in Trafford 28 January to 3 February 2022)



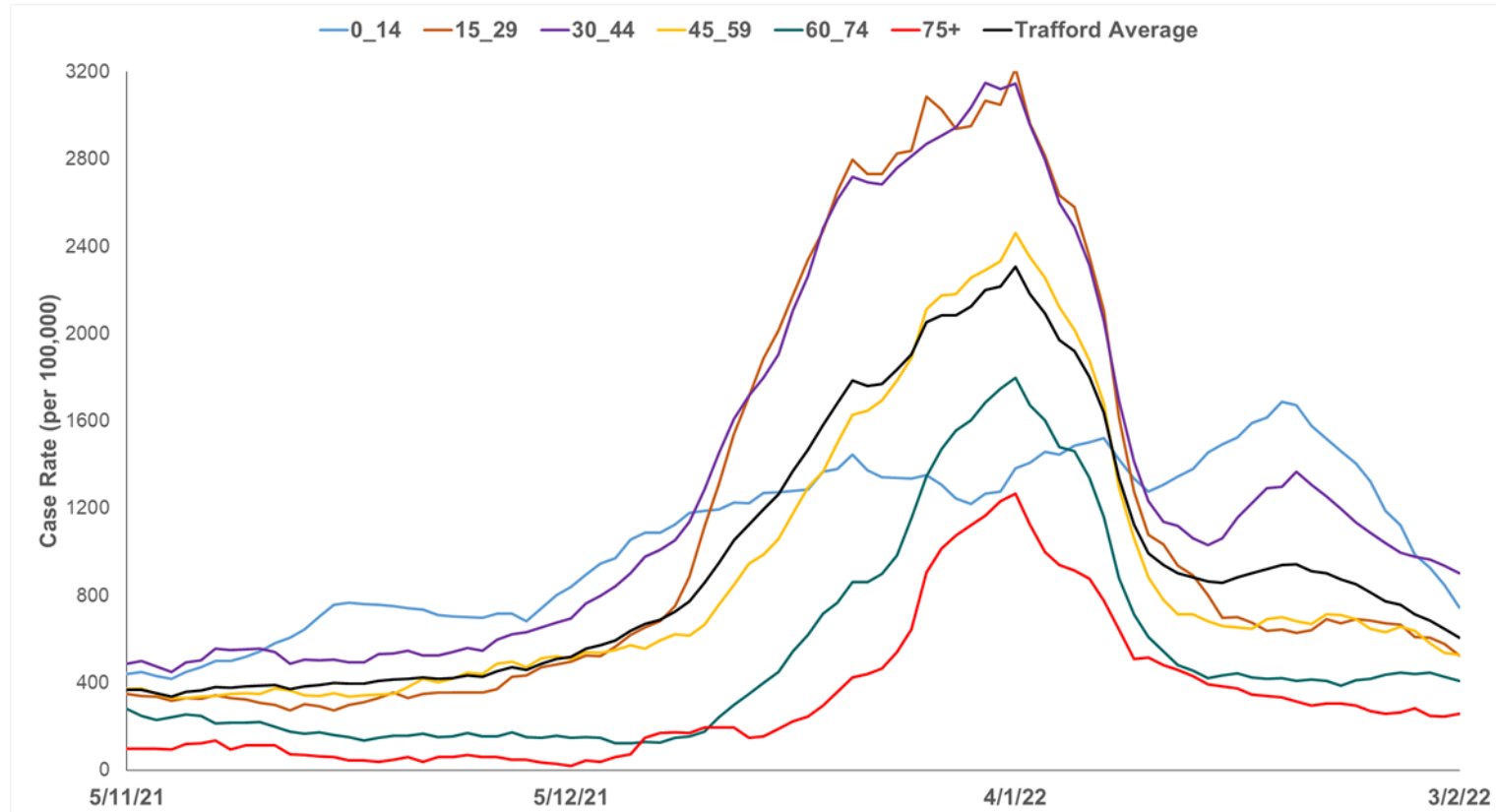
Source: PHE Covid-19 Situational Awareness Explorer

Summary Context:

Cases remain widespread across the borough, but we are seeing much less variation in rates by Wards. Rates have dropped for all Wards when compared to the previous week. Case rates remain highest for wards in the Central and Southern Wards of the borough.

Age Groups: Cases

Figure 3. Age-specific case rates per 100,000 population Trafford, 7-day moving average 5 November 2021 – 3 February 2022)



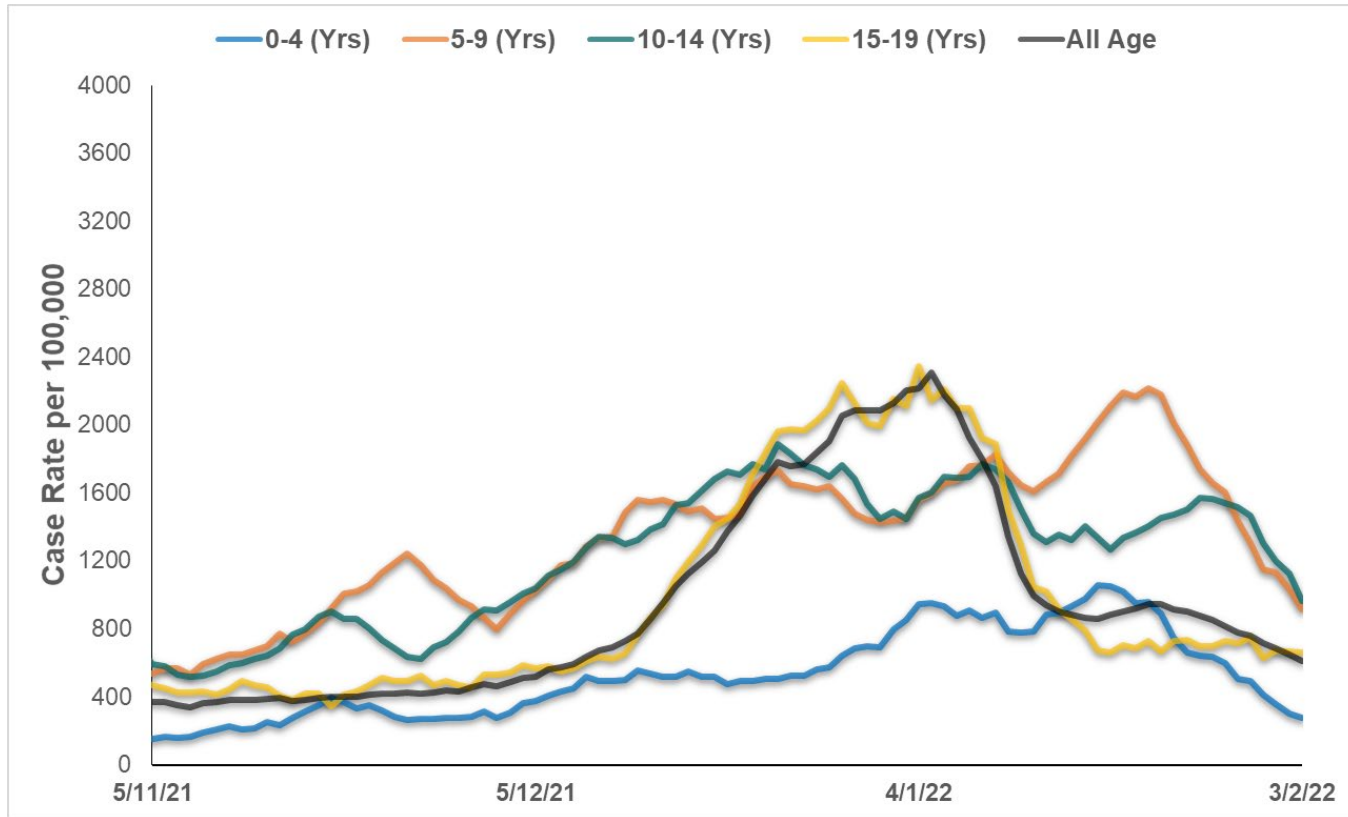
Source: PHE Covid-19 Situational Awareness Explorer

Summary Context:

Case rates have dropped for most age groups when compared to the previous week. Residents aged 0-14 and 30-44 have seen the sharpest reduction in positive cases. Case rates are now highest for 30-44 year olds (at **904.2/100k** from **1135.9/100k**). There has been little change in positive cases for residents aged 60+ (at **357.6/100k** from **372.4/100k** in the previous week).

School Age Groups: Cases

Figure 4. Age-specific case rates per 100,000 population Trafford, 7-day moving average (5 November 2021 – 3 February 2022)



Source: PHE Covid-19 Situational Awareness Explorer

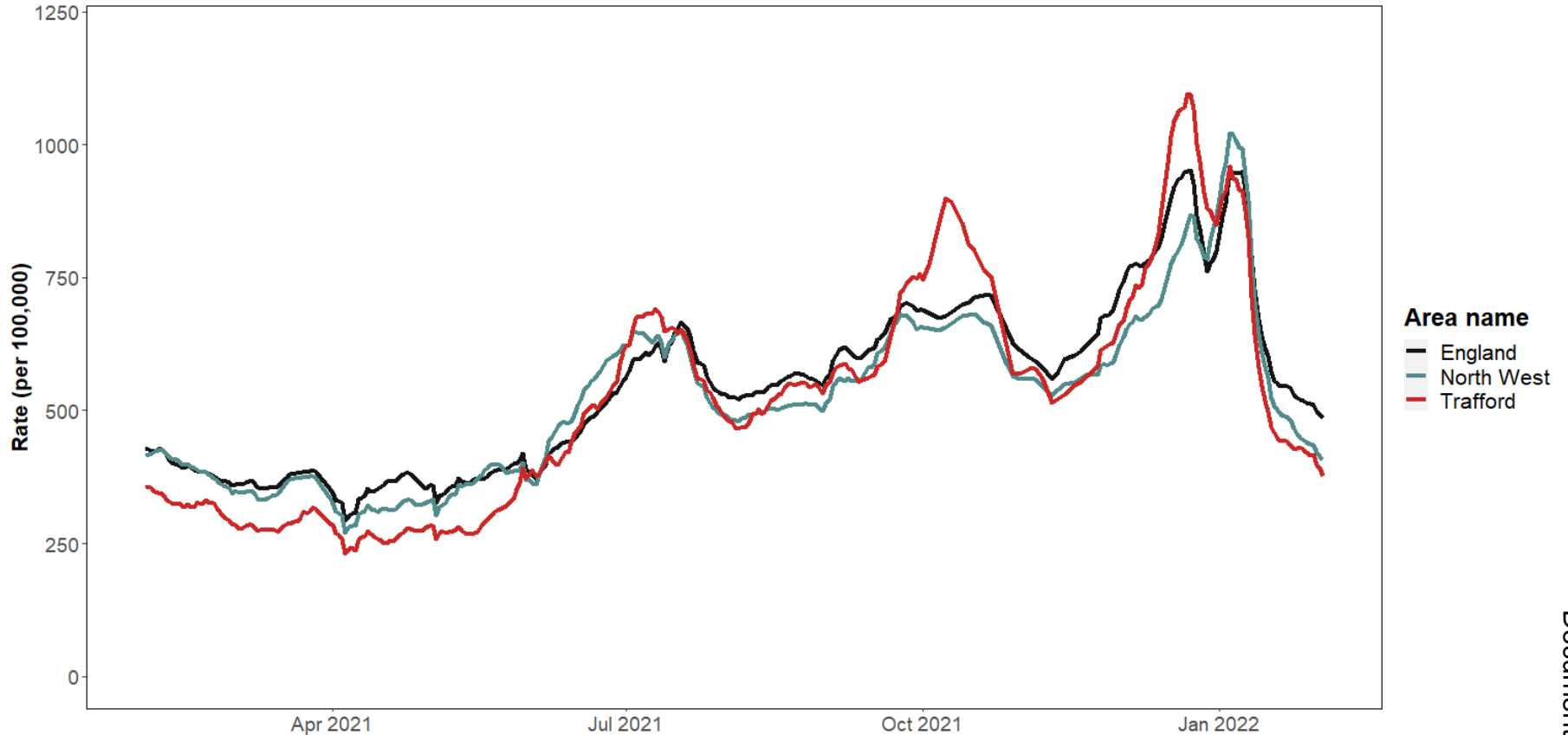
Summary Context:

The past week has seen a sharp reduction in positive cases for young persons below the age of 15. There has been little change in positive cases for 15-19 year olds. Case rates are highest for 10-14 (at **966.4/100k**) and 5-9 year olds (**911.9/100k**).

PCR Testing

Figure 5. Daily Testing Rate (7-day average): England, North West, & Trafford

Trafford, 2 February 2021 - 2 February 2022



Source: PHE COVID-19 Situational Awareness Explorer

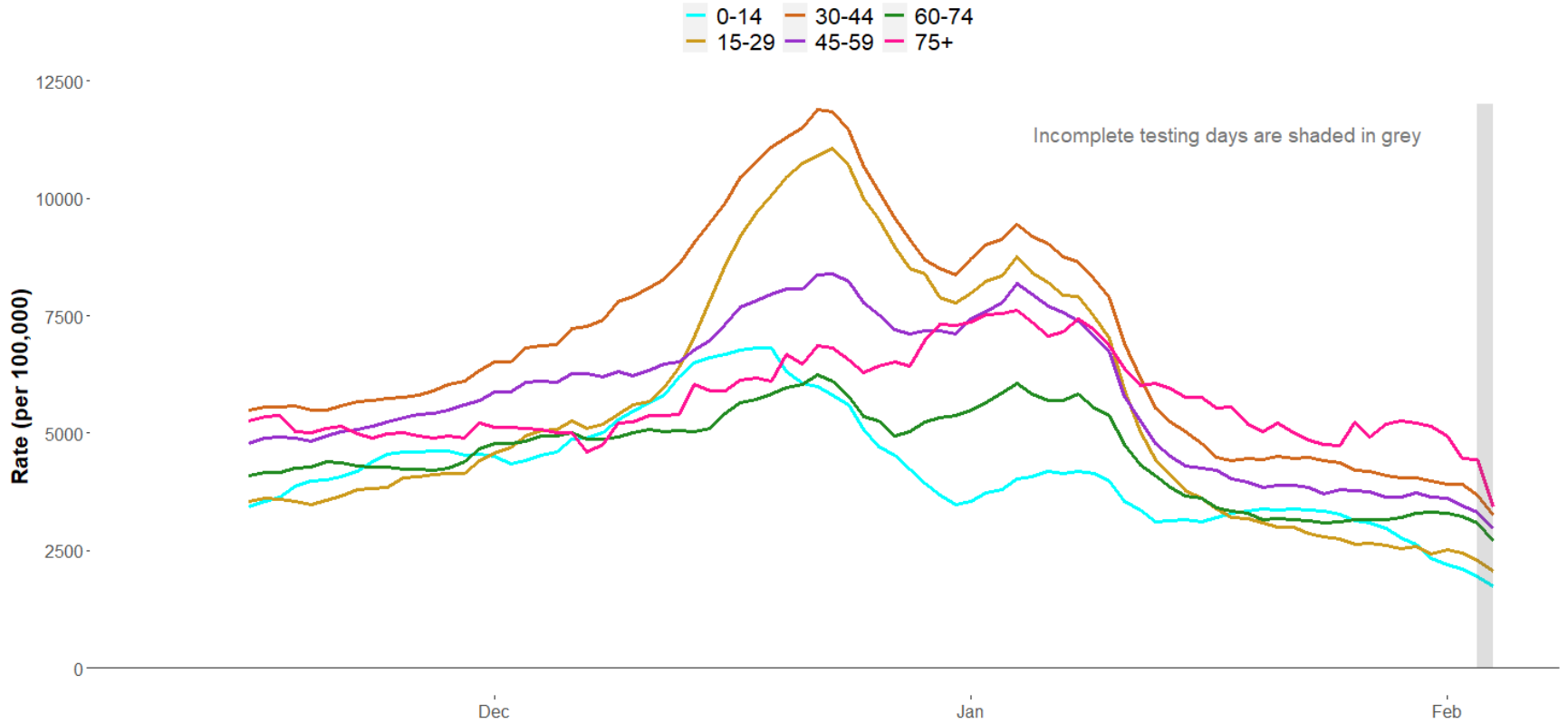
Summary Context:

PCR testing rates are now at their lowest since June 2021. Trafford has a lower testing rate than the North West and England average, and 3rd highest testing rate across the 10 GM boroughs.

Age Groups: PCR Testing

Figure 6. Age-Specific PCR testing rate per 100,000 residents (7-day moving)

Trafford, 9 November 2021 - 3 February 2022



Source: Data from PHE COVID-19 Situational Awareness Explorer

Summary Context:

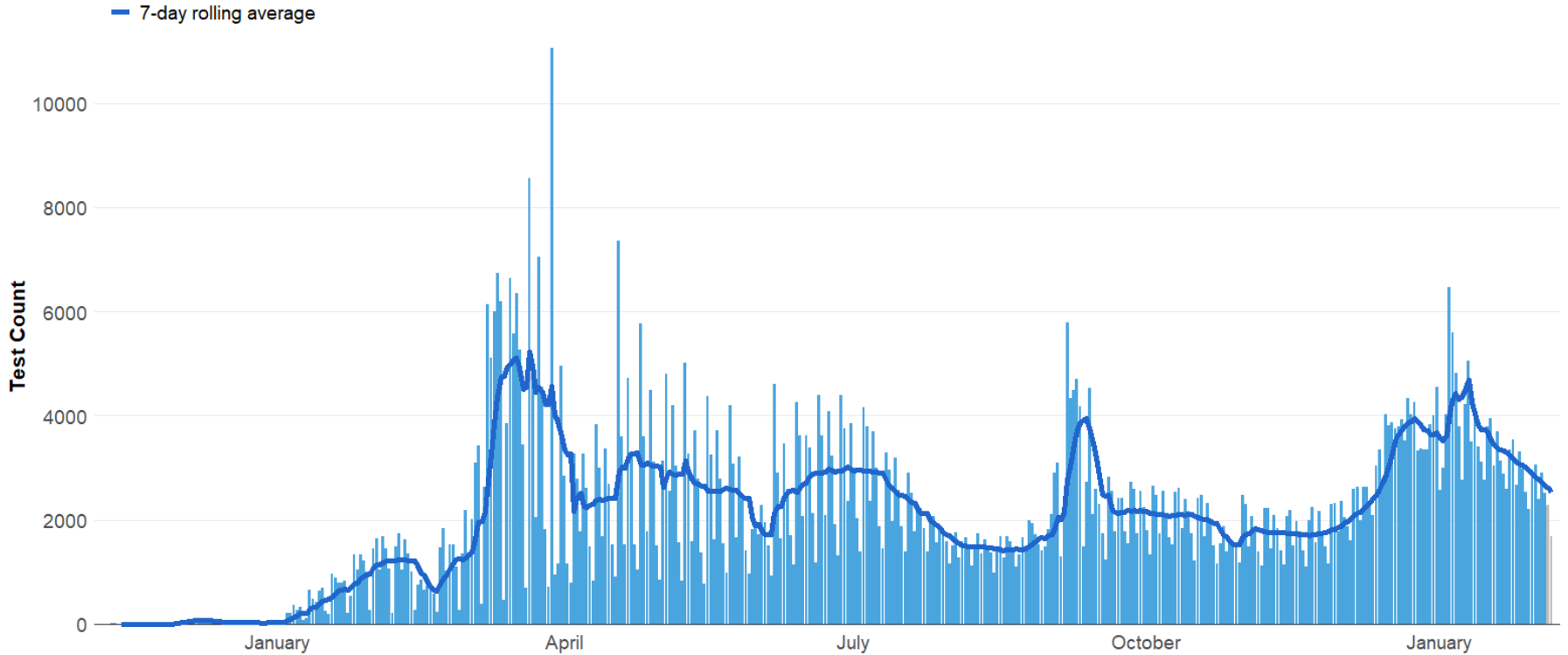
We have seen further reductions in PCR testing among all age groups. The sharpest reduction in PCR testing has occurred amongst 15-29 year olds. PCR testing remains highest for residents above the age of 74 (**4436.4/100k**), and is now lowest for 0-14 year olds (**1947.5/100k**).

LFD Testing

Figure 7. Number of Daily LFD Tests

Trafford, 13 November 2020 - 5 February 2022

Incomplete testing days are shaded in grey



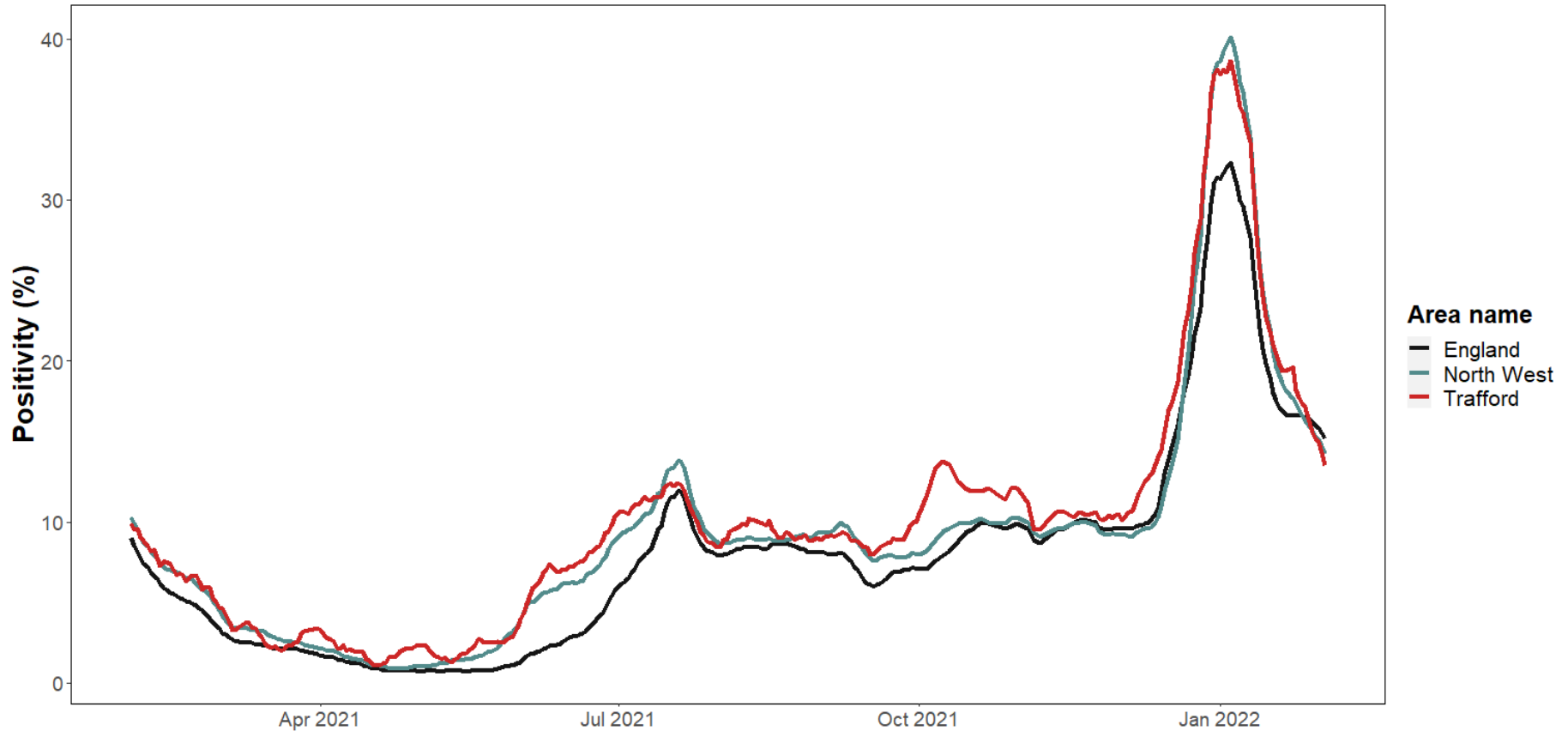
Summary Context:

Lateral Flow Testing has seen further reductions over the past week, similar to testing levels from November 2021. On average, **2545** tests are being conducted by Trafford residents per day.

Positivity

Figure 8. Weekly Positivity Rates: England, North West, & Trafford

Trafford, 2 February 2021 - 2 February 2022



Source: Data from PHE COVID-19 Situational Awareness Explorer

Summary Context:

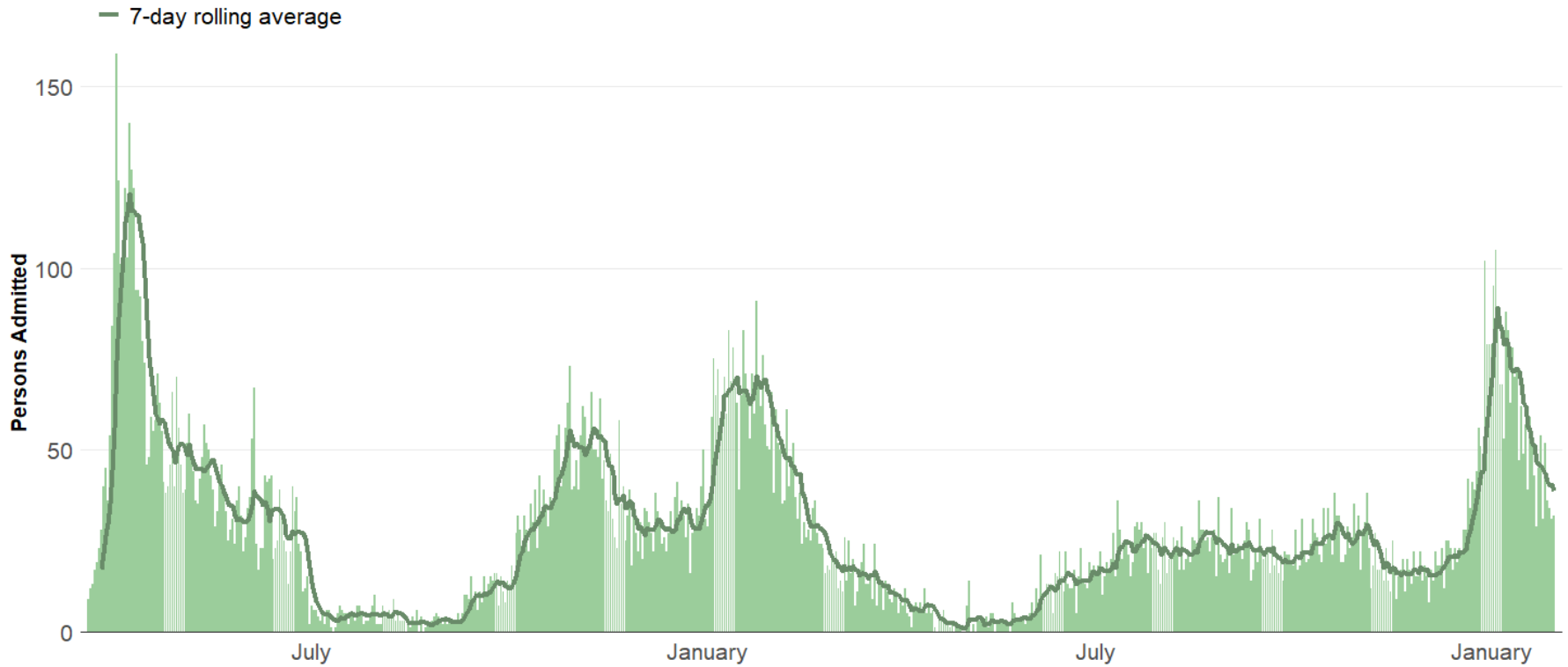
Trafford's positivity rate has closely resembled the North West average over the past 5 weeks, but is now below both the England and North West averages. Trafford currently has the lowest positivity rate across the 10 GM boroughs, at **13.5%**.

Hospital Admissions

(Data includes any resident (not specific to Trafford-only residents) for: Manchester University, Stockport, and Warrington & Halton Teaching Hospital Foundation Trusts)

Figure 9. Daily count of COVID-19 hospital admissions

19 March 2020 to 30 January 2022



PHE Coronavirus Dashboard

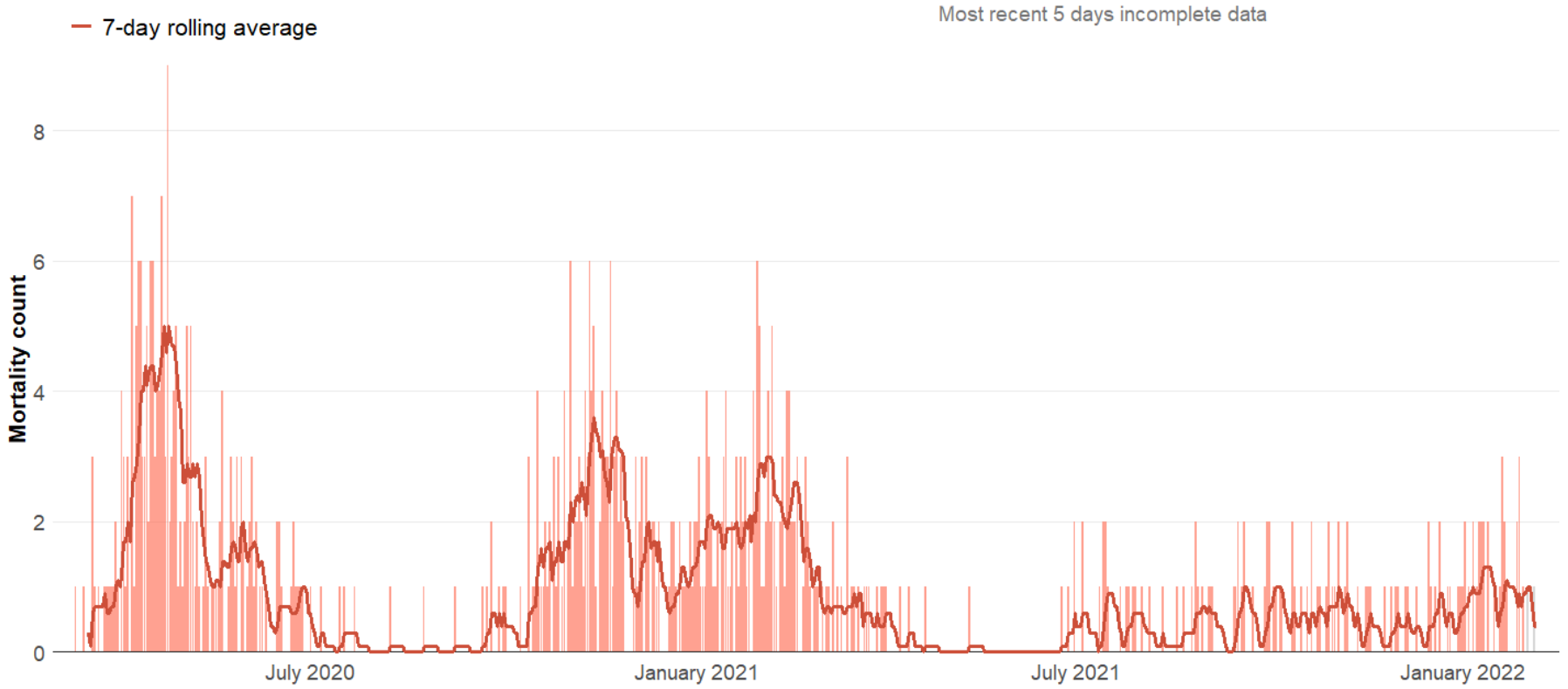
Summary Context:

We have seen further reductions in local hospital admissions linked to COVID-19. However, the number of admissions remain above levels between February 2021 – December 2021. There were **270** COVID-19 admissions during the week ending Sunday 30 January 2022 compared with **323** COVID-19 admissions during the previous week.

Trafford Resident COVID-19 Mortality

Figure 10. Daily count of COVID-19 deaths within 28 days of positive test result

Trafford, 11 March 2020 - 5 February 2022



Source: PHE Coronavirus Dashboard

Summary Context:

There was a slight increase in the number of deaths linked to COVID-19 at the end of January, however we haven't seen that continue into February. There were **8** deaths for Trafford residents testing positive from COVID-19 in the 14 days up to Saturday 6 February 2022 compared with **13** deaths for Trafford residents during the previous week.

Vaccinations

Overview

- The total percentage of Trafford residents (Aged 12+) administered their first vaccine dose by **5-2-2022** was **83.7%** (increasing by **0.2%** from the previous week).
- The total percentage of Trafford residents (Aged 12+) administered both vaccine doses by **5-2-2022** was **78.4%** (increasing by **0.3%** from the previous week).
- Booster uptake is at **85.3%** (increasing by **0.2%** from the previous week) for residents who are **currently** eligible (eligible from time of second dose).

Cohort Groups

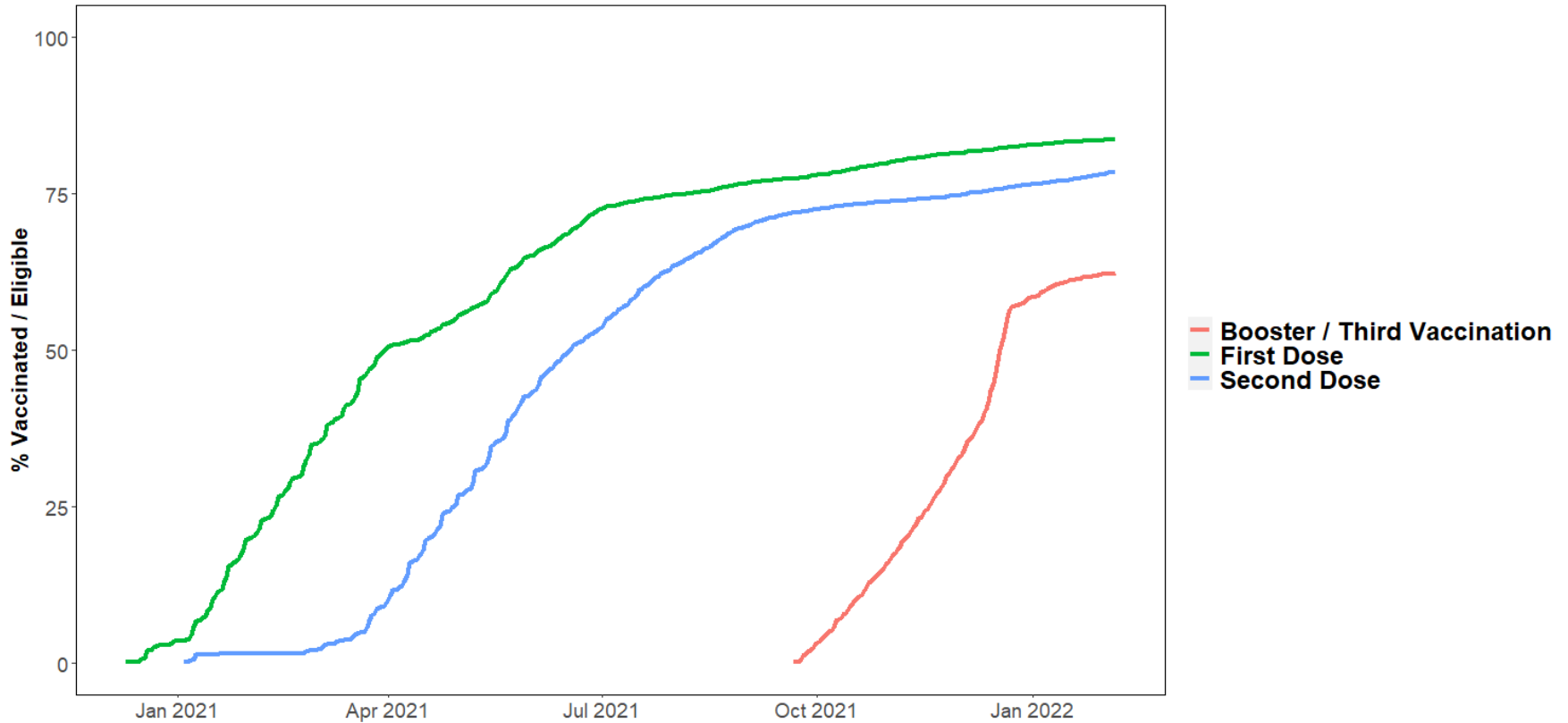
- Vaccine uptake remains lowest in adults and young people below the age of **40**. Similar to patterns we have seen among 18-39 year olds, vaccine uptake is starting to stall among **16-17** year olds - well below **80%**.
- Vaccine uptake is at **72.6%** for 18-29 year olds (increasing by **1.3%** since January 1st) and **75.4%** for 30-39 year olds (increasing by **0.7%** since January 1st).
- Vaccine uptake is at **72.6%** for 16-17 year olds (increasing by **2.8%** since January 1st) and **60.3%** for 12-15 year olds (increasing by **6.3%** since January 1st).
- Vaccine uptake for priority groups 1-9 is at **91.6%**, increasing by **0.2%** since January 1st.
- Uptake (1st dose cohorts 1-12) across Trafford's four localities is lowest in the north (**74.2%**) and highest in the south (**87.7%**).
- There is a social gradient in vaccination uptake (first dose) across Trafford, with decreasing uptake as the level of deprivation increases (**69.5%** for most deprived compared to **89%** for least deprived areas). This gradient widens as we drop down the age groups.
- We are seeing variation in second dose and booster uptake, also linked to age and deprivation.

Programme Changes

- 12 to 15 year-olds can now receive a second dose of the Pfizer vaccine, no sooner than 12 weeks after their first dose. The in-school programme of clinics is now underway across our secondary school settings, plus in out-of-school clinics. Details of local clinics can be found here: <https://www.traffordccg.nhs.uk/Coronavirus/COVID-19-vaccine-walk-in-clinics-in-Trafford.aspx>
- Children aged between 5 and 11 who are most at risk of COVID-19 are now being offered the vaccine. Children aged 5 -11 who are in a clinical risk group or who live with someone who is immunosuppressed can get the first dose of the COVID vaccine in line with advice set out by the JCVI.
- Adults who had COVID-19 more than 28 days ago and missed their booster during the December surge programme, should now get their booster vaccine as soon as possible.
- The requirement for NHS and CQC regulated staff to be vaccinated by April is being reconsidered by government.
- Novavax covid vaccine has been approved for use in the UK and its potential use as part of our vaccination programme will now be considered by JCVI.
- People planning to travel to abroad on holiday should check vaccine requirements as many countries now require travellers to be fully vaccinated, in some cases including a booster

Vaccine Delivery Timeline

Figure 11. Running Total of First, Second, and Third/Booster Dose Vaccines
 Trafford Residents, up to February 5th 2022



Source: COVID-19 Situational Awareness Explorer

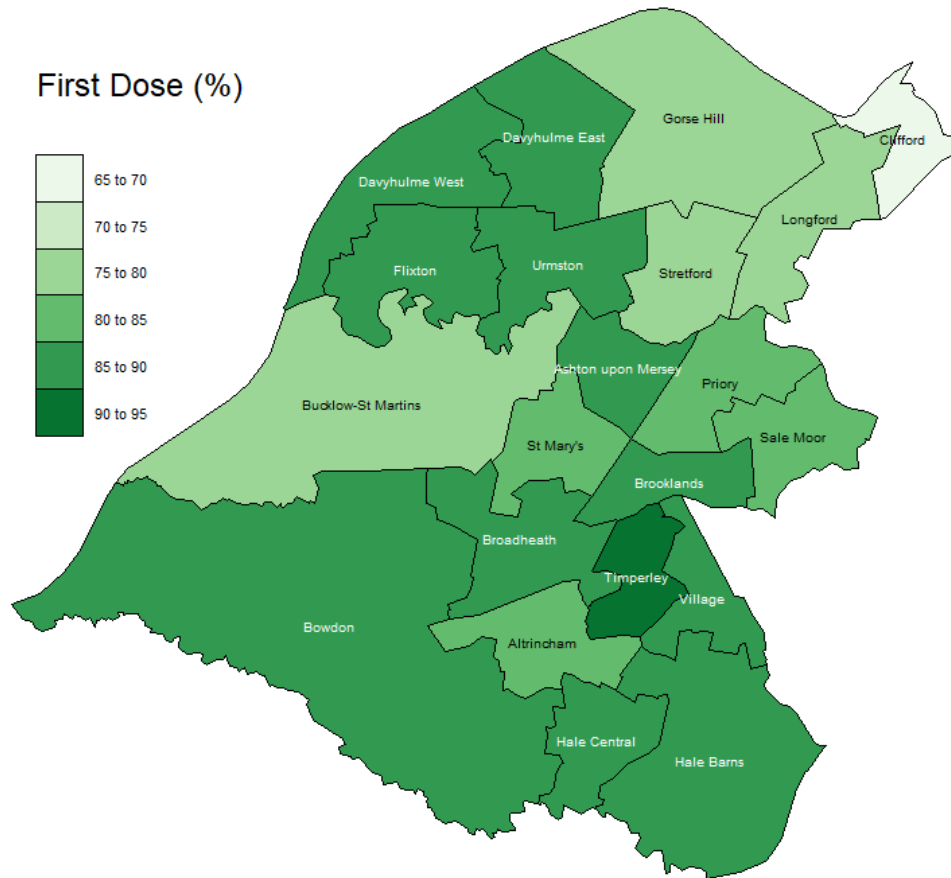
Summary Context:

Vaccine uptake for residents above the age of 12 is progressing slowly, increasing by **0.2%** in residents receiving their first dose and by **0.3%** in residents receiving both vaccine doses within the last 7 days (up to February 5th). Third dose / booster vaccines have increased by **0.2%** within the last 7 days.

Please note: Booster uptake in this slide refers to every residents aged 12+, regardless of eligibility status.

Vaccine Uptake by Ward

Figure 12. First dose vaccine uptake (%) for all eligible residents (12+) by Ward
Trafford, up to 6th February 2022



Summary Context:

Vaccine uptake is lowest in Trafford's North locality and highest in Trafford's South locality. We are seeing variation in vaccine uptake (first dose) across the borough, ranging from **67.4%** (Clifford) to **91%** (Timperley).

Further resources

- [COVID-19 page](#) on [Trafford Data Lab's](#) website
- [COVID-19 Resources](#) developed by [Manchester Health & Care Commissioning](#)
- Public Health England's [Coronavirus dashboard](#)
- [Our World in Data's](#) coronavirus pages

This page is intentionally left blank