

Public Engagement Board

COVID-19 Programme Team

CLT Lead: Eleanor Roaf, Director Public Health Trafford

08 September 2021

Data surveillance update paper to Public Engagement Board

Report Summary:

This paper provides an update on the current data position for COVID-19 within Trafford and provides comparative information with other GM localities. Data insights into any potential trends are provided based on best available public health information and intelligence available.

Overview of the current position:

- There were **775** confirmed cases during the week ending Wednesday 01 September, with the highest number of cases (**144**) reported on **Tuesday 31 August**.
- Our 7-day case rate declined to **326.5/100k** from **330.3/100k** in the previous week. Our rate has been stable over the previous 3 weeks. More recent data suggests that we may start to see a slight increase in our 7 day case rate.
- There has been little change in Trafford's testing rate over the previous 7 days, currently at **532.2/100k**. We are seeing similar testing rates to the North West average (**499.5/100k**) and England average (**548.1/100k**). Trafford's positivity rate (**9.0%**) is similar to the previous week (**8.9%**). Also similar to the North West average (**9.3%**) but above the England average (**8.1%**).
- We continue to see less variation in rate by age. Rates by each age group remain mostly unchanged when compared to the previous week.
- Rates remain highest for 15-29 year olds (**536.7/100k**), followed by 30-44 year olds (**402.6/100k**), and 45-59 year olds (**324.5/100k**).
- Rates for Trafford's 60+ residents have dropped from the previous week (**166.8/100k** from **200.1/100k**), but still remains high. This is the age group we are most concerned about in regards to serious illness.
- Case rates have increased for 11 wards, dropped for 8 wards, and remain unchanged in 2 wards.
- Case rates are highest in Longford (**520.2/100k**), Davyhulme West (**459.5/100k**), Hale Barns (**387.2/100k**), and St Mary's (**376.4/100k**) wards.
- Ward rates have increased most (**+118.7%**) for Bowdon during the most recent week, currently at a rate of **368.3/100k**.

- Trafford's case rate is similar, but above the North West (**316.4/100k**) and England (**303.2/100k**) average. Case rates across most of the GM boroughs are stable when compared to the previous week - Trafford has the 3rd highest case rate across the 10 GM boroughs.
 - There were **209** COVID-19 admissions during the week ending Sunday 15 August. There were **269** COVID-19 admissions during the previous week (Including Manchester University Foundation Trust, Salford Royal Foundation Trust, Stockport Foundation Trust, and Warrington & Halton Teaching Hospitals Foundation Trust).
-

Along with the rest of Greater Manchester, Trafford was seeing a rise in its case rate throughout May and June, peaking in early July. We then started to see a sharp rate reduction across the region, also similar to the England average. Trafford's case rate started to rise in early August, however remained stable throughout the remainder of August, fluctuating between rates of **300-350/100k**. The majority of Trafford's cases are now made up of the delta variant.

The percentage of Trafford residents (above 16) administered with at least 1 vaccine dose remains high at **82%**, (dropping from the previous week as 16 & 17 year olds are now included in the data). However, uptake has slowed down since July 1st, increasing by only **3.2%**. We have also only seen an increase of **1.1%** since August 1st. The percentage of residents receiving both doses is progressing well, greater than **77%**, which is an increase of **18%** since July 1st.

Initially, we were seeing a sharp rise in vaccine uptake for our young adult population (below 40 years) but this has now started to slowdown. The percentage of residents administered at least 1 vaccine dose is at **73.1%** (increasing by **4.8%** since July 1st) for 30-39 year olds, and **67.4%** (increasing by **12.3%** since July 1st) for 18-29 year olds.

Despite steady improvements, we are still seeing inequalities in vaccine uptake, with lower uptake in some of our more deprived areas and in some minority groups. While the overall percentage uptake of vaccination is lower in our Black/Black British populations, overall, the largest numbers of people still to be vaccinated are in our White ethnic groups. We anticipate that inequalities in uptake will widen as the vaccine is rolled out to younger age groups and we are taking steps to reduce this risk. The North of the borough remains our major area of concern both for endemic Covid and for serious illness following Covid. We are working with local community groups to increase uptake of vaccination. Our vaccination roll out is continuing, we are working to ensure those young people aged 16 and over who want the vaccine are able to access it, this includes exploring pop up clinics in some of our college settings.

We are seeing lower uptake in our under 40s, and have a particular concern regarding low uptake in pregnant women. Covid in pregnancy can be very dangerous for the woman and her unborn child, and we would urge all pregnant women (as well as all people contemplating parenthood) to get vaccinated as soon as possible to protect themselves and their baby.

We would strongly encourage all residents to take up the offer of vaccination as soon as they are eligible, and to remember the importance of the second dose in protecting themselves and others. While Covid is generally not as serious in younger people, long Covid can have a very significant impact, and vaccination protects against this too.

Contact Officer:

Name: Tom Seery, Public Health Data Surveillance Analyst

Tel: 07929876642

Email: Thomas.seery@trafford.gov.uk

1.0 Distribution of COVID-19 cases within Trafford

1.1 Early December saw a gradual increase in cases, rising more sharply near the end of the month and going into early January.

1.2 Trafford's cases started to drop following the national lockdown. We then started to see case rates stall over a 14-day period in mid-late February.

1.3 A drop in the number of daily cases during early March was followed by a 10-day period (March 21st - March 31st) where daily cases increased, increasing our 7-day case rate to greater than 70/100k on March 31st.

1.4 April saw a steady flow of cases, reporting, on average, between 15-20 cases per day.

1.5 We started to see volatility in our weekly rates in late April, going into May, however rates remained below a rate of 60/100k.

1.6 We started to see a sharp rise in positive cases from late May, continuing into July as more than 180 daily cases were being recorded for every 7-day period.

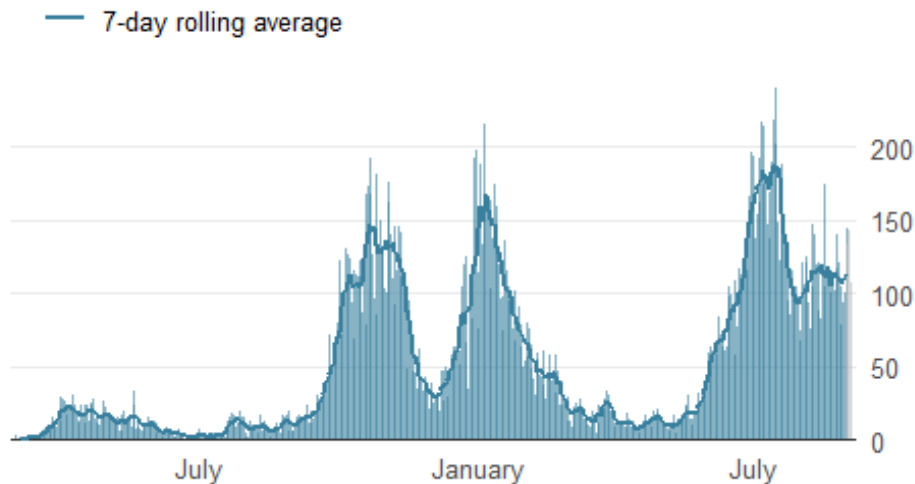
1.7 Mid-July saw a sharp reduction in Trafford's case rate, dropping below 300/100k, whilst less than 100 daily cases were being recorded for every 7-day period.

1.8 Following the sharp rate reduction in July, we started to see a slight increase in positive cases moving into August.

1.9 Trafford's case rate has been stable over the past 3 weeks, fluctuating between rates of **300-350/100k**.

Figure 1. Epidemic curve of daily confirmed new cases

Trafford, 02 March to 03 September 2021

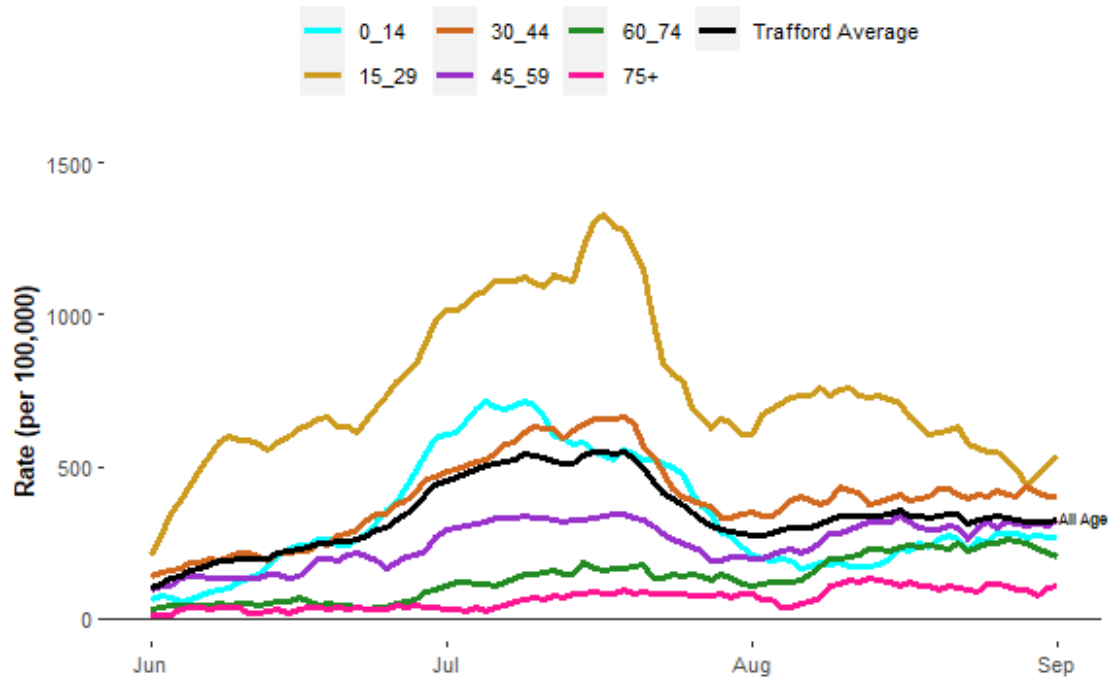


1.10 We have seen little change in rates across each of Trafford's age groups during the past 7 days. Rates are highest for 15-29 year olds (**536.7/100k**), followed by 30-44 year olds (**402.1/100k**) and 45-59 year olds (**324.5/100k**).

1.11 We have seen a slight rate increase for young persons aged 11-16 during the most recent week. As we are also seeing high positivity rates for this age group (higher than any other age), we may expect to see an increase in positive cases as testing increases with the return of school term.

1.12 We have seen rates drop for residents 60+ during the most recent week (to **166.8/100k** from **200.1/100k** in the previous week). We have started to see the number of 60-74 year olds testing positive drop, however still remains high. This is the age group where we have most concern about serious illness.

Figure 2. Age-Specific case rate per 100,000 residents (7-day moving)
Trafford, 03 June to 01 September 2021



1.13 Trafford's 'White' ethnic group, as of week ending September 01, contribute to the highest number of cases (**537**), followed by the 'Asian / Asian British' ethnic group (**83**).

Table 1. Case count and incidence per 100,000 population by ethnicity
Trafford, 26 August to 01 September 2021

Ethnic_Group	n	Rate
Other	12	545.5
Black / Black British	35	535.2
Mixed	26	431.1
Asian / Asian British	57	317.1
White	566	292.0

2.0 Geographical spread of COVID-19 in Trafford

2.1 Rates have increased for 11 wards, decreased for 8 wards, and remain unchanged for 2 wards during the most recent week.

2.2 Case rates remain across the borough as the top 4 highest wards (Longford, Davyhulme West, Hale Barns, and St Mary's) are from each of Trafford's four localities. Each of these wards have a rate greater than **370/100k** and have increased from the previous week.

2.3 All wards have a case rate greater than **190/100k**, but are highest for the wards of Longford (**520.2/100k**) and Davyhulme West (**459.5/100k**). Ward rates have increased most (**+118.7%**) for Bowdon during the most recent week, currently at a rate of **368.3/100k**.

3.0 Testing in Trafford

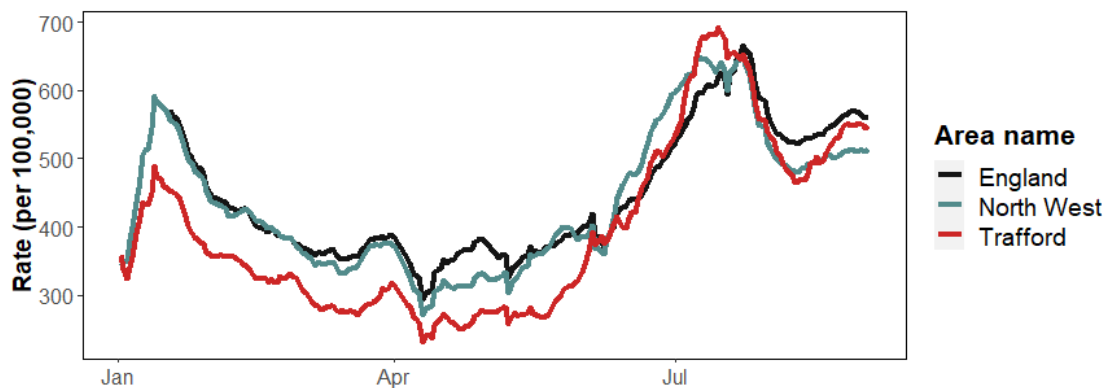
3.1 Over a 7 day period, ending September 01, the majority (**92.6%**) of COVID tests were conducted in our pillar 2 sites, consisting of all out-of-hospital testing sites. 57 cases were reported from pillar 1 sites.

3.2 Figure 3 shows that, following a peak testing rate of **690/100k** in mid-July, we saw a sharp reduction in the number of residents getting tested, continuing to drop into August and dropping to a testing rate as low as **465.1/100k**.

3.3 We started to see testing rates stabilise during the second week of August, however we have since seen Trafford's testing rate increase above **500/100k**.

3.4 As of August 31, Trafford's 7-day positivity rate sits at **9.0%** - which is similar to the previous week (**8.9%**). Trafford's positivity rate is similar to the North West average (**9.3%**) but higher than the England average (**8.1%**).

Figure 3. Daily testing rate (7-day average): England, North West, & Trafford
Trafford, 02 January to 02 September 2021



4.0 Comparative data of COVID-19 cases within the local authorities of Greater Manchester

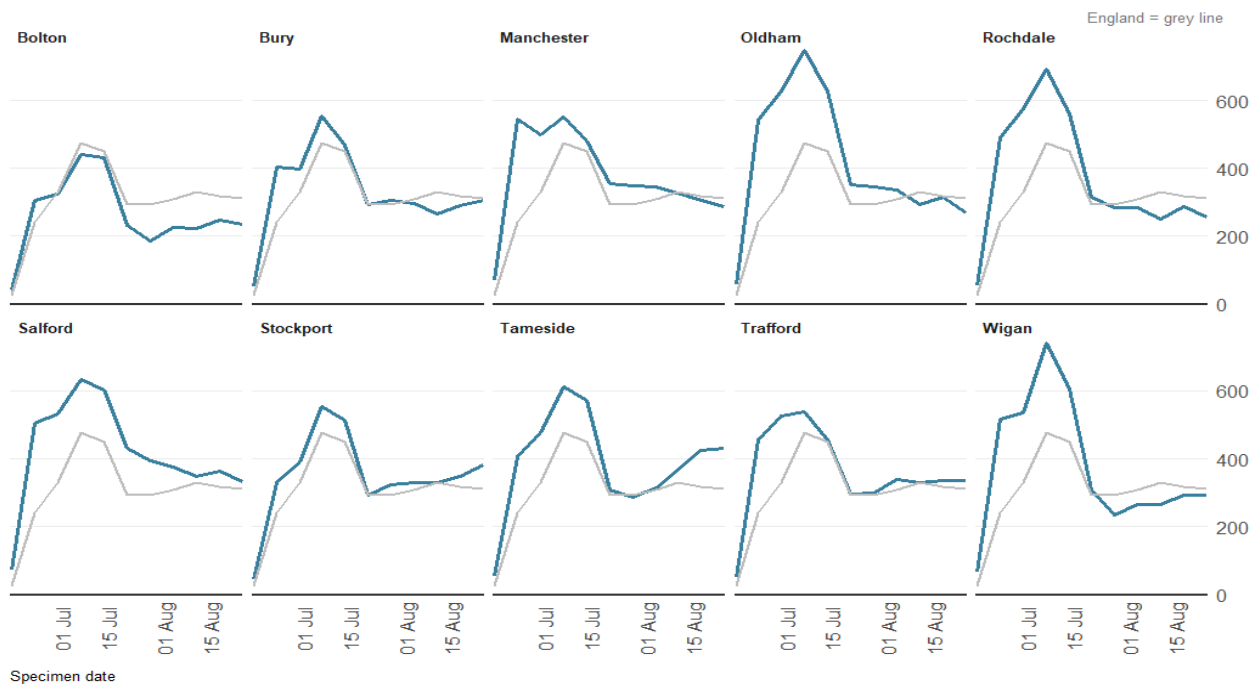
4.1 As presented in figure 3, regional case rates started to rise throughout May and June.

4.2 For each of the 10 GM boroughs, case rates peaked in early July, reaching as high as **700/100k** in some boroughs.

4.3 Case rates across the region started to drop throughout July, stabilising in early August. Some boroughs (Trafford included) started to see a slight rate increase during the second week of August, however those rates started to stabilise again.

4.4 The most recent data shows that case rates are mostly stable across each of the 10 GM boroughs, ranging from a current rate of **235.1/100k** (Bolton) to **430.9/100k** (Tameside).

Figure 4. Weekly incidence per 100,000 population by local authority
Greater Manchester, 26 June to 02 September 2021

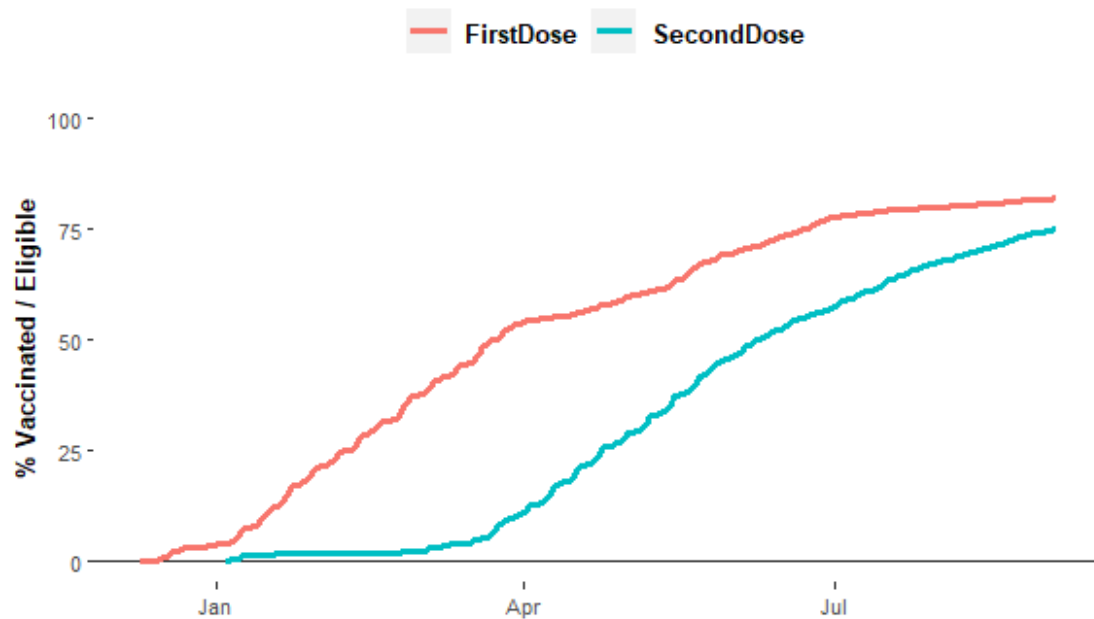


5.0 Vaccinations

- The total percentage of Trafford residents (Aged 16+) administered their first vaccine dose on **Saturday 04-09-2021** was **82%**.
- The total percentage of Trafford residents (Aged 16+) administered both vaccine doses on **Saturday 04-09-2021** was **75.1%**.
- Uptake for first and second doses are reduced from the previous week as they now reflect residents 16+ (as opposed to 18+).

Figure 5. Running total of first and second dose vaccines for Trafford residents (16 years and above)

Trafford, 09 December to 04 September 2021



Source: COVID-19 Situational Awareness Explorer