

# Altrincham Minor Injuries Unit Update



# Background

- Altrincham MIU is based at Altrincham Hospital
- The MIU treats minor injuries including broken limbs, simple wounds, bites, minor burns, cuts and lacerations. It is unable to accept patients who present with illness such as coughs, colds, headaches, allergies and sore throats.
- General opening hours prior to April 2020 for the MIU are 08:00 – 20:00 from Monday to Friday and 10:00 – 18:00 at weekends. It is closed for public holidays.
- AMIU unit stood down in response to the pandemic on 1st April 2020 and stood back up to reduced hours on 24th June 2021 due to staffing shortfalls.
- The unit once again stood down on 28th of July 2021. During this time ENP staff were temporarily redeployed to work at Wythenshawe ED.
- A briefing was shared with the system in November 2021 of the ongoing suspension of the service
- Scrutiny advised in June 2022 of ongoing suspension due to continued staffing challenges until Autumn 2022
- Alternative model of delivery/options expected to be shared with system stakeholders and partners in Autumn 2022

## Background

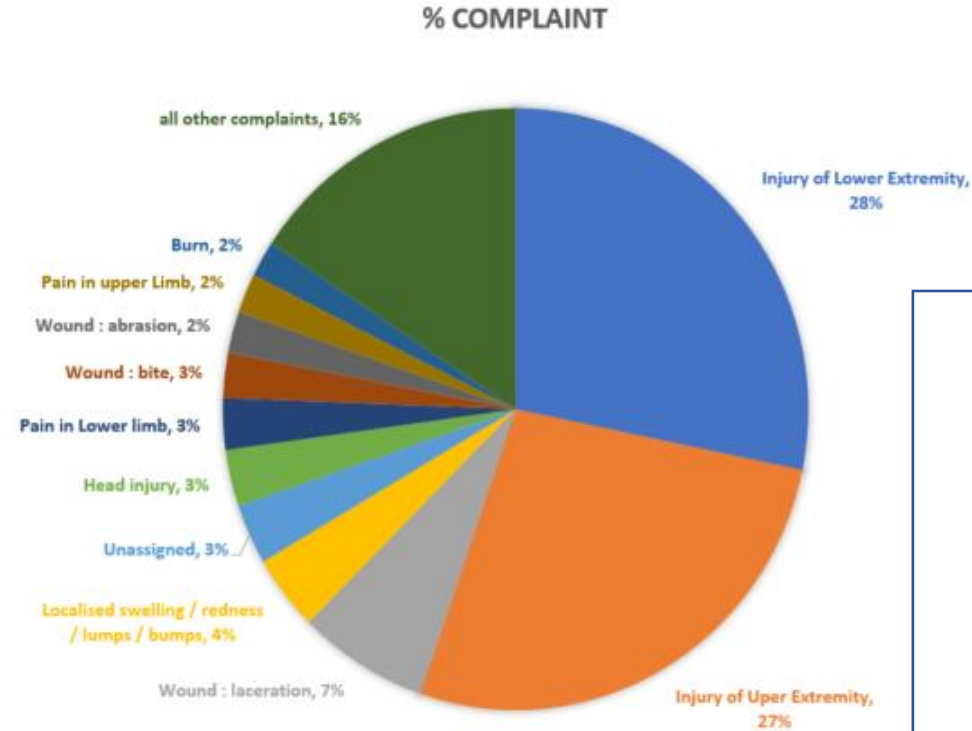
- Altrincham Minor Injuries is a well loved service by the people of Altrincham, known for quick and easy access.
- Constituents have raised concerns regarding the loss of Altrincham services with local MPs and Councillors
- It operates out of a relatively new Altrincham hospital ground floor alongside a Diagnostic Service.
- Altrincham Hospital also hosts Phlebotomy and outpatients services as well as renal dialysis.

# MIU Usage Prior to Closure

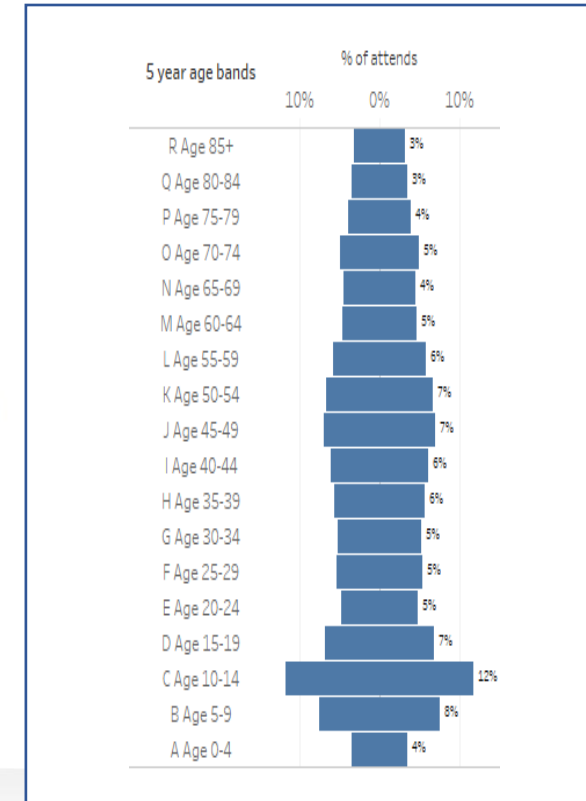
## Attends at AMIU by chief complaint

Percentage of all 18,244 Patients 2019/20

Chief Complaint	% complaint
Injury of Lower Extremity	28
Injury of Uper Extremity	27
Wound : laceration	7
Localised swelling / redness / lumps / bumps	4
Unassigned	3
Head injury	3
Pain in Lower limb	3
Wound : bite	2
Wound : abrasion	2
Pain in upper Limb	2
Burn	2
all other complaints	16
<b>Total</b>	<b>100%</b>

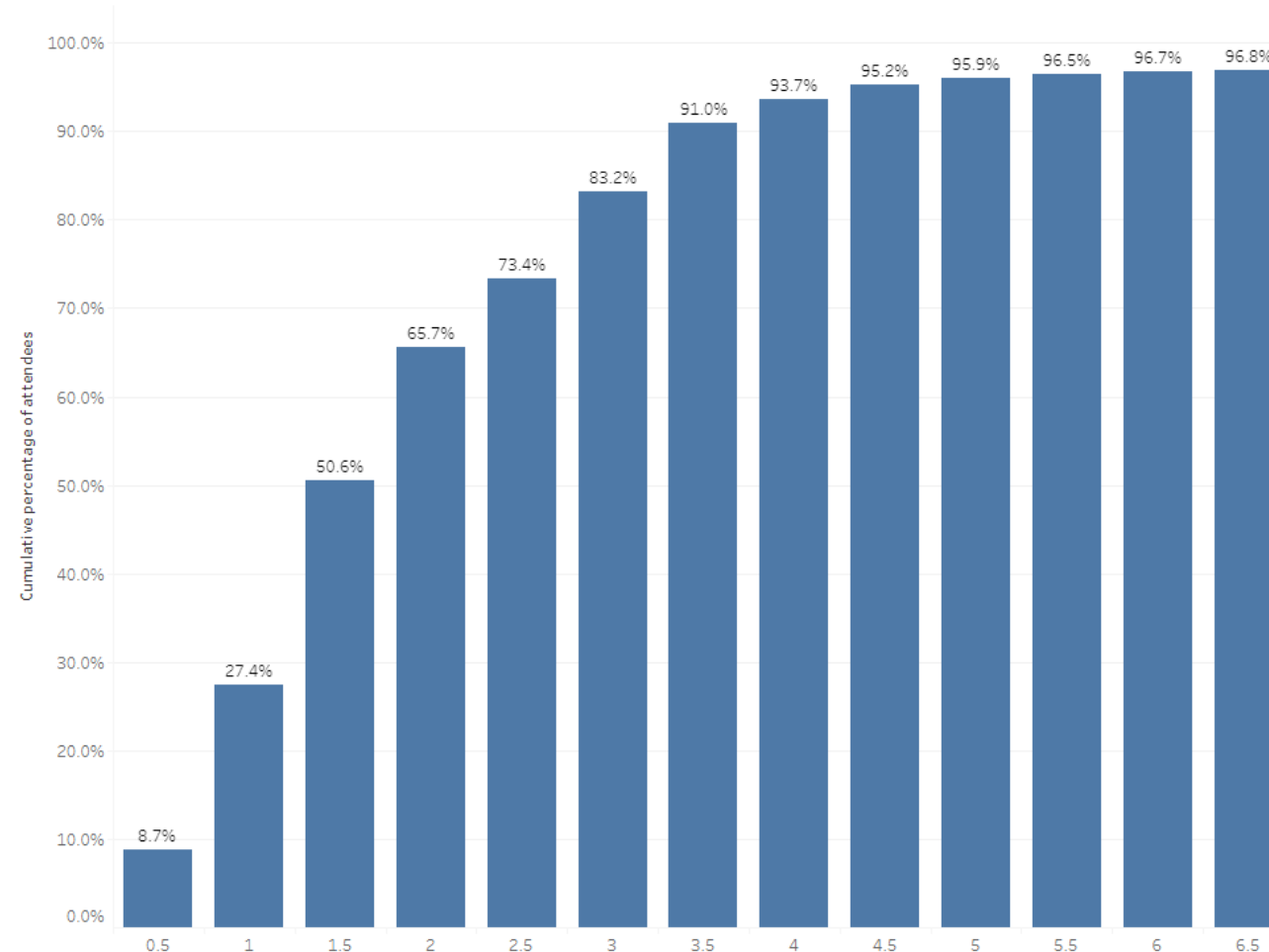


- The top two presenting complaints (injuries to arms and injuries to legs) made up 57% of all attendances
- The age profile of attendees reflects a relatively even split across most ages, but there is a spike in the “Age 5-9” and “Age 10-14” bands.



# Patient Proximity to AMIU

Percentage of traftford attendees living within each half mile increment of AMIU  
2019-20, based on Isoa centroids



- The graph outlines the distance travelled for patients to the AMIU
- As can be seen from the graph just over 50% of patients travel 1.5 miles to the AMIU and 73% of patient travelled 2.5 miles to the service

# Impact of Stand down

Proportion of ED/UTC/MIU attends by Trafford patients at each site

% of trafford urgent care attendances by site

Provider site	Financial Year				
	2018-19	2019-20	2020-21	2021-22	2022-23
Wythenshawe	36.3%	36.6%	48.1%	51.6%	50.6%
Trafford General UCC	22.6%	23.4%	20.6%	19.4%	22.1%
Oxford road	19.7%	18.9%	21.8%	18.9%	18.4%
Salford Royal	7.0%	7.2%	9.1%	8.8%	8.2%
Altrincham MIU	14.1%	13.5%	0.0%	0.8%	0.0%
NMGH	0.3%	0.3%	0.3%	0.4%	0.4%

Trafford urgent care attendances by site

Provider site	Financial Year				
	2018-19	2019-20	2020-21	2021-22	2022-23
Wythenshawe	33,269	33,154	30,451	43,143	10,882
Trafford General UCC	20,697	21,181	13,054	16,250	4,751
Oxford road	18,020	17,139	13,803	15,826	3,962
Salford Royal	6,369	6,564	5,790	7,381	1,767
Altrincham MIU	12,949	12,269	2	659	1
NMGH	315	272	202	376	91

- When the AMIU stood down, the proportion of Trafford patients attending Wythenshawe increased. The increase was broadly in line with the proportion of patients previously attending the AMIU.
- There is a notable increase in the levels of activity at the Wythenshawe site with activity increasing from 33,154 to 43,143 for Trafford patient attendances
- Post 2019/20 ENP staff were temporarily redeployed to work at Wythenshawe ED.

N.B 2022-23 is part year April 2022-date

## Short Term Delivery Proposals for Altrincham Minor Injury Unit (AMIU)

The proposals are:-

- 2 day delivery model for AMIU from September 2022  
Monday & Tuesdays 08:00-16:00
- 4 days delivery model for AMIU from Jan 2023  
Monday, Tuesday, Thursday & Friday 08:00-16:00

### Risks/Issues

Staff retention and sickness; As previously experienced extended nurse practitioner posts are difficult to recruit too, so any staff absence can result in difficulties in maintaining the service provision

Health Scrutiny are asked to advise on the proposal for stand up of the Altrincham MIU, which in turn will be recommended to Locality Board and NHS GM.



Greater Manchester  
Integrated Care

Questions?



## Longer Term Proposal

- It is important that the people of Trafford have access to high quality urgent care, which is offered in a way that is simple to navigate and meets the needs of the population, working within resource and making best use of available workforce.
- Therefore we are asking for the support of Health Scrutiny for a system review of urgent care to understand need, access, demand /capacity, workforce available and financial flows, by December 2022.
- So that future strategic and operational recommendations can be made to Locality Board, NHS Greater Manchester and which are co-produced with population of Trafford which ensure resources are aligned based on need, access is simplified, variation and duplication are minimized whilst ensuring services are consistent with the national agenda in relation to the priorities for urgent care provision.

# Urgent Care Access National Requirements

## UTC NHSE Guidance

As part of the NHS Long Term Plan, the NHS is changing the way patients access services. Patients have often expressed that they are confused by the range of different services on offer for urgent care and as a result the NHS has outlined their intentions to simplify this through reducing these different service to primary care hubs, Urgent Treatment Centres and Emergency Departments.

Patients have told us the range of alternatives available can be confusing – Walk in Centres, Urgent Care Centres, Minor Injury Units and others with local names and all with differing levels of service. So A&E is understandably the default choice for many people unsure where to turn when they need urgent care or advice.

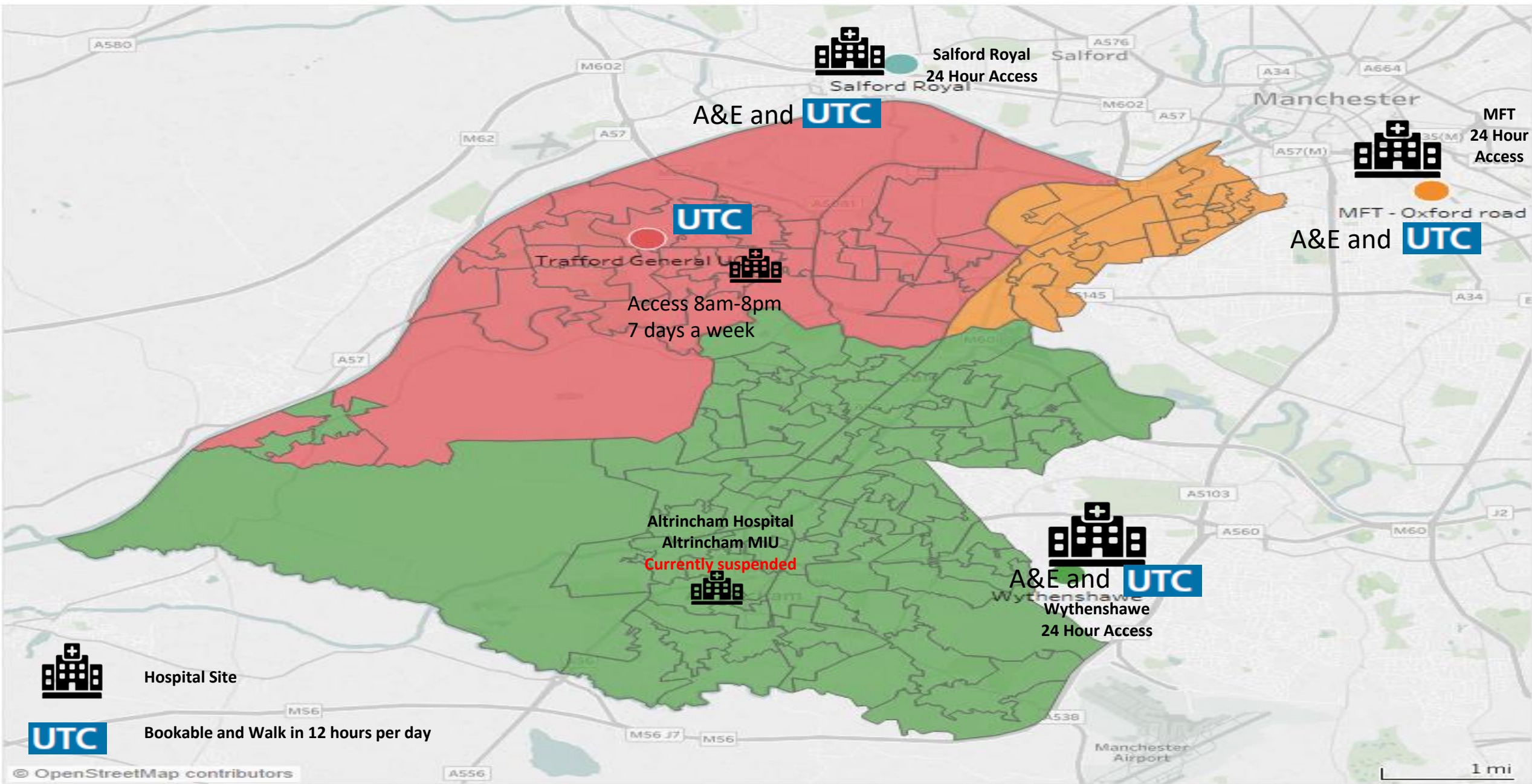
This is bad for the NHS because it puts unnecessary pressure on A&E and other parts of the urgent and emergency care system, and it's bad for patients because many are treated in the wrong setting.

Commonality of service provision under the UTC name will increasingly end the current confusing range of options and simplify the system so patients know where to go and have clarity of which services are on offer wherever they are in the country.

<https://www.england.nhs.uk/urgent-emergency-care/urgent-treatment-centres/>

NHSE Urgent Treatment Centre Principles and Standards – July 2017

# Trafford Urgent Care Landscape



# Trafford South Locality: Health and Wider Determinant Overview

## Wider Determinants & Demography

- The south locality has the largest proportion of residents over the age of 64.
- The south locality is Trafford’s least deprived locality, containing 4 of the 5 least deprived wards (out of 21) in the borough.
- While the south of Trafford is more affluent, there are small pockets of higher deprivation in areas of Village, Broadheath, and Altrincham.

## Wider Determinants and Health

- A relationship occurs between health and deprivation, as we generally see better health outcomes in areas of lower deprivation, as indicated in the south verses the north of Trafford.
  - Compared to the rest of the South neighbourhood, there are slightly worse child health, mortality, and hospital incidence outcomes in Village and Broad heath wards where we have some small areas of higher deprivation, Despite this, in most cases these wards have similar or better outcomes than the Trafford average.

## Health Needs of Trafford’s South Locality

- A boy born in the south locality can expect to live 1.2 years longer than the average Trafford boy.
- A girl born in the south locality can expect to live 1.2 years longer than the average Trafford girl.
- While the south has a higher proportion of older people, its healthy life expectancy is also higher than the Trafford average, meaning that people are healthier for longer.
  - However, an older population does mean there are likely to be more people with conditions related to ageing in Trafford’s south locality.

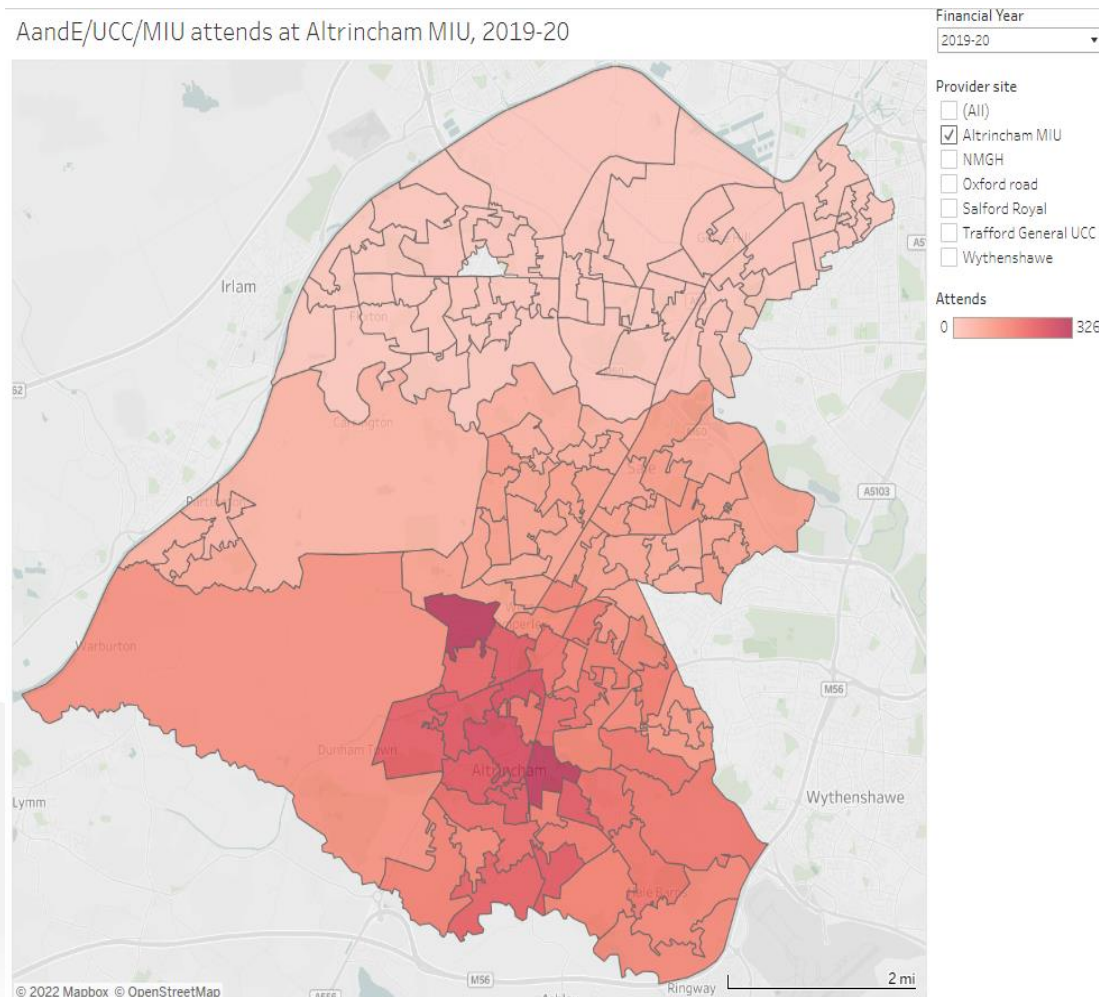
**Figure 1.** Life Expectancy by Gender for Trafford Localities

	Male	Female
<b>England</b>	79.7	83.2
<b>Trafford</b>	80.2	83.9
<b>North</b>	77.2	83.1
<b>West</b>	78.7	83.4
<b>Central</b>	81.2	84.3
<b>South</b>	81.4	85.1



# Usage of the service

AandE/UCC/MIU attends at Altrincham MIU, 2019-20

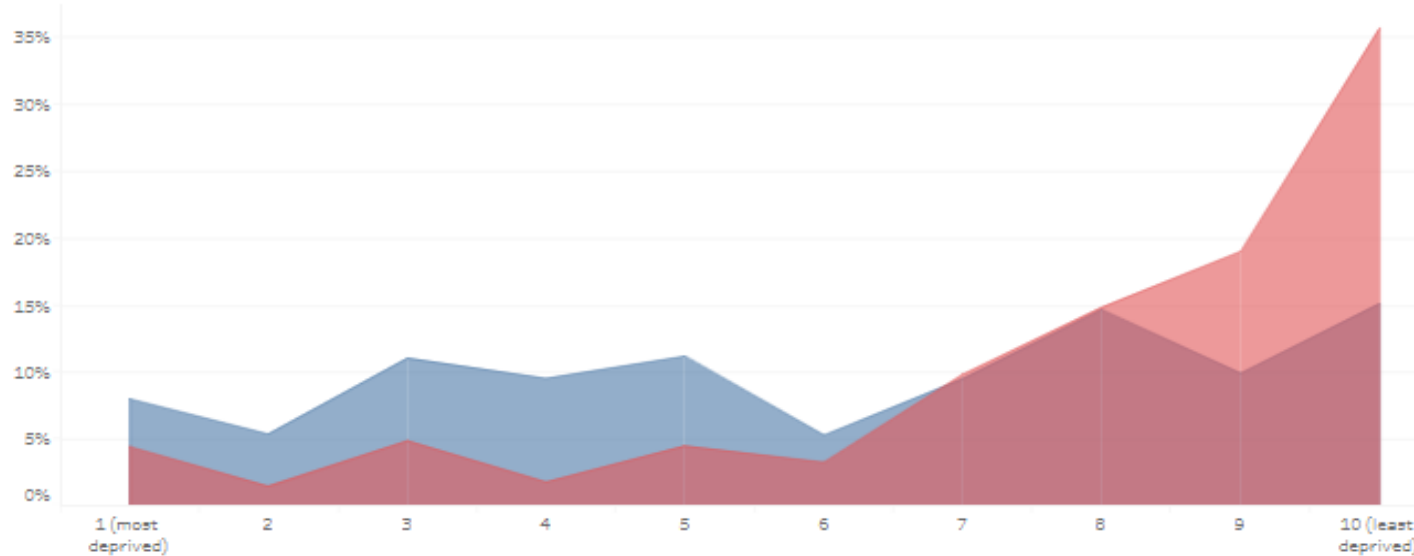


- Within Trafford, Altrincham MIU captures Minor Injuries attendees primarily from the Trafford South and Central regions.
- However, within this catchment, the majority of attendances come from Altrincham. This is a relatively narrow coverage of the borough which may not represent best value of the Trafford pound.
- For 2019/20, urgent care attendance for Trafford registered patients at Altrincham MIU was 12,272, representing 13.5% of the total urgent care attendance in that period. (There were 18,244, attendances in total at the AMIU during 2019/20, 5,972 of which were out of area patients)
- This is the second lowest utilisation (Salford lowest) in the borough amongst the monitored sites
- The map shows the levels of attends across Trafford by Lower Super Output Area

# Usage of the service – by deprivation decile

Percentage of trafford attendances in each deprivation decile

Altrincham attends compared to other MFT sites 2019/20  
Decile 1 is most deprived 10% nationally, 10 is least deprived



Deprivation Decile	% of altrincham attends	% of non-altrincham attends
1 (most deprived)	4%	8%
2	1%	5%
3	5%	11%
4	2%	10%
5	5%	11%
6	3%	5%
7	10%	10%
8	15%	15%
9	19%	10%
10 (least deprived)	36%	15%

- The graph and table shows the % of Altrincham attends in each national deprivation decile in pink, % of other MFT site attends in each decile in blue.
- The graph outlines that the patients attending the AMIU were largely from less deprived areas.
- The highest proportion of attends at the AMIU were from the least deprived areas

## Longer Term Proposal

- It is important that the people of Trafford have access to high quality urgent care, which is offered in a way that is simple to navigate and meets the needs of the population, working within resource and making best use of available workforce.
- Therefore we are asking for the support of Health Scrutiny for a system review of urgent care to understand need, access, demand /capacity, workforce available and financial flows, by December 2022.
- So that future strategic and operational recommendations can be made to Locality Board, NHS Greater Manchester and which are co-produced with population of Trafford which ensure resources are aligned based on need, access is simplified, variation and duplication are minimized whilst ensuring services are consistent with the national agenda in relation to the priorities for urgent care provision.



Greater Manchester  
Integrated Care

Questions?